



Riga XL 6

Showroom  
now open in Central Texas!  
(see inside cover)



**2023**  
Catalog

**Fine Greenhouses, Composters, Garden Planters & More**



VI 36 on Stem Wall



## Greenhouses & Pavilions

Why Exaco?.....	3
Royal Victorian Greenhouses.....	4-5, 12-13
Retro Greenhouses.....	6, 12-13
Royal Orangerie Greenhouses.....	7, 12-13
Cathedral.....	8, 12-13
Eos Royal T and Modern.....	9, 12-13
Junior Victorians.....	10, 12-13
Design your own greenhouse.....	11
Victorian Greenhouse Specifications...	12-13
Greenhouse Accessories.....	14-16
Why Riga Greenhouses?.....	17
Riga Greenhouses .....	18
Riga XL Greenhouses.....	19
<b>Cold Frames.....</b>	<b>20</b>
<b>Modular Raised Beds.....</b>	<b>21</b>
<b>Composters and Accessories.....</b>	<b>22-24</b>
<b>Birdbaths and Fountains.....</b>	<b>25</b>
<b>Indoor and Outdoor Planters.....</b>	<b>26-28</b>
<b>Rotary &amp; Folding Clotheslines.....</b>	<b>29</b>
<b>Rondo Pavilion and Grill House.....</b>	<b>30</b>
<b>Bali Gazebo .....</b>	<b>31</b>



Come visit our new  
showroom!  
16001 Impact Way  
Pflugerville, TX  
(just north of Austin)





## What makes Exaco different?

We offer top-quality greenhouses and products that our customers love. Skilled engineering and quality materials create superior products that will last for years to come. Beauty, strength, and functionality combine to provide a great growing environment or peaceful retreat.

Most of our products are manufactured in Europe and adhere to environmental and safety standards that exceed those of the USA. All products are BPA free and many of our plastic products are made from recycled material and are 100% recyclable.

Excellent Customer Service!!!



**Thicker Polycarbonate = Improved Insulation & Strength**

**4mm Twin-Wall R=1.43 (Basic entry level)**



**6mm Twin-Wall R=1.54 (Better Hobby level)**



**8mm Twin-Wall R= 1.61 (Riga curved panels)**



**10mm Twin-Wall (Riga gables & Janssens)**



**16mm Twin-Wall R=2.50 (Riga XL)**



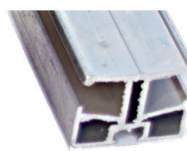
**Economy  
Frame**  
1mm thick



**Better Economy  
Frame (26x29mm)**  
1mm thick



**Victorian Tubular  
Frame (36x52mm)**  
1mm thick



**Riga Structural  
Frame (40x30mm)**  
2mm thick



**Riga XL Structural  
Frame (42mmx38mm)**  
2mm thick

*"Exaco not only has high quality products but they also have an excellent team behind the products to ensure every customer is happy with their purchase. Basically, when you work with Exaco you work with a dedicated team that makes your life a whole lot easier."*

*-Jesse, Online Retailer*



# Royal Victorian Greenhouses

Featuring a rectangular floorplan, our Royal Victorian greenhouses are now more customizable than ever! We now stock black or green framed greenhouses with 4mm tempered glass or 10mm high-quality twin-wall polycarbonate for improved insulation and light diffusion. We now have an upgrade option for a poly roof/ glass sidewall combination. Standard features include sliding door(s) with customized placement, 6'7" sidewalls, a louvre window with auto opener and cold weather cover, roof windows with automatic or manual spindle opener(s), large bottom frame, gutters, downspouts, and a misting system.

Available upgrades include double doors, hinged doors, adding doors, door drop kits to place structure on a knee wall to increase height, additional roof/louvered windows, shade cloth, shelves, seedtrays, or custom colors.

See pages 12-13 for sizes and specs



VI 34 Glass in Black



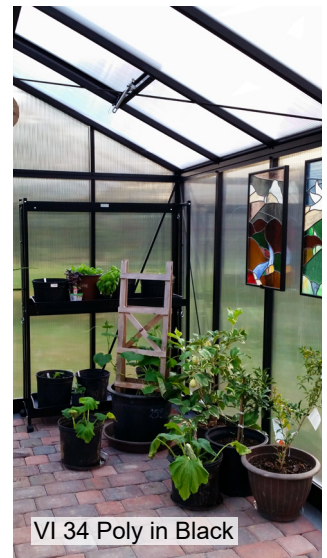
VI 36 Glass in Black on Stem Wall



VI23 and VI36 in green with 10mm poly glazing



VI 34 Glass in Green



VI 34 Poly in Black



VI36 in black



VI 34 Black in Glass

*"I've purchased two greenhouses in the past two years from Exaco, the VI-23 and the VI-36. They're both great. Exaco's service is outstanding, and the products are engineered to be built in just a few days. I've built two myself - alone! The video instructions make the construction easy and fast. My bonsai and orchids are happy in their new home."*

*- Harris, greenhouse owner*



# Why Choose a Janssens Victorian Greenhouse?



- Classic Victorian style with elegant full-length glazing panels
- Glass or polycarbonate glazing options for Royal Victorians:
  - High-quality 4mm thick tempered safety glass is tougher, stronger, and clearer
  - 10 mm Twin-wall polycarbonate\* has a tough UV-coating and provides insulation and diffused light
  - Upgrade for polycarbonate roof with glass walls\*\*
- Thick rubber seals hold glazing securely & provide insulation
- Substantial aluminum profiles beat any competitors in this price range
- Decorative Victorian roof decorations included, but optional
- Flyscreens available for doors and windows
- Gutters and downspouts are standard on all models
- Options for door upgrades: single/double sliding doors and single/double hinged doors
- Low threshold kits available
- Drop door kits allow a "ground mount" model to be placed on a stem wall (height of your choice) to allow for more growing space, small trees, large tropical plants
- Standard rectangular models are designed as DIY kits for handy homeowners (hinged doors/walls increase difficulty)
- Optional shelving, seed trays, shade cloth, hooks, automatic window openers, exhaust fans and more (see pp. 14-16)
- Other sizes, colors & styles are available - see p 11

\*Royal Victorian Models only \*\*Rectangular Royal Victorian Models only

## What makes Royal Victorians different from other models?

- Royal Victorians have 6'7" high sidewalls for more growing space and headroom
- Higher sidewalls allow doors on any side of the greenhouse
- Royal Victorians include a louvered sidewall window with auto opener for air intake with a cold weather cover included
- Misting/Irrigation system included
- Options for 10mm polycarbonate glazing or a poly roof/glass walls combo on rectangular models

See pages 12-13 for sizes and specs



VI36 Royal Victorian with door drop kit and upgrade to hinged double doors





## The Retro Royal Victorian Greenhouse



VI 34 Retro in Black

Decorative panels and narrow glass (14" wide) adorn the elegant Windsor Estate-style greenhouse to create a beautiful gardening setting. It is these two features that make the Retro Victorian greenhouses stand out from our standard Royal Victorian line. The decorative aluminum panels have a relief decoration and are powder coated to match the rest of the structure. The Retro Victorians come standard with lockable double hinged doors, 6'7" sidewalls, push-out sidewall windows, roof vents, a large bottom frame, gutters with downspouts and a misting system. Shade cloth, shelves and flyscreens may be added to these greenhouses as well. We regularly stock the 34 (10'2" x 15') and 46 (12'7" x 19'11") sizes in a black frame. Other colors and sizes are available to special order (allow 3 to 4 months for delivery). Please contact Exaco for more details. Made in Belgium.



See pages 12-13 for a listing of the features and specifications of the Retro Victorian Greenhouses.





## Royal Orangerie Greenhouse



The Royal Orangerie Greenhouse has a T-shaped floorplan, giving it a grand entrance point and more square footage to enjoy. The Royal Orangerie comes standard with 6'7" high sidewalls, double sliding doors, 3 roof windows with openers, 2 louvre vents (with openers and cold weather covers). Upgrades and accessories for this model include shelves, shade cloth, hinged doors, placement on a stem wall, fly screens and more. Please note that the seedtray and top shelf for this T-shaped model is designed to fit in one of "wings" of the greenhouse. Made in Belgium.

Our stock models are 12'10" D x 15'6" L/W x 9' H, 185 sq ft with glass glazing and dark fir green or black framing. This model may be special ordered in other colors and sizes - see page 11 for details.

For additional specifications on the Royal Orangerie, please see pages 12-13.





# The Cathedral



A stunning greenhouse or additional outdoor living space! The Cathedral features a wider footprint than our Royal Victorians with an eye-catching cupola at the top. The cupola and wider frame is supported with two heavy-duty aluminum arched portal frames (2.3" W x 5.2" D) that also anchor the greenhouse. The structure has full-pane 4mm tempered safety glass and large gutters with downspouts. Our standard model is 300 sq.ft. - 15' W x 19'11" L x 12'2" H with 6'8" high side walls (Cupola: 10'2" L x 5' 4"W). Our stocked models have Anthracite or Bronze/(Beige Gray) frames and include 1 set of hinged double doors, 1 single sliding door, 2 push-out side windows, 1 louvre window, and 4 roof windows with spindle openers. Other colors and sizes may be special ordered - please see page 11 for details. Please note: This model is designed for assembly by a skilled handyman or assembly company. Made in Belgium.





# EOS Royal T Antique Orangerie

A dramatic Orangerie featuring narrow 14" wide glass panes and a steeper 38° roof slope. This T-shaped model is more petite in footprint and wall height than the Royal Orangerie. The foyer is offset from the main ridge to highlight its unique features. The 6' high sidewalls are lower than the Royal Victorian models, but taller than the Junior Victorians. The Eos Royal -T includes 4 roof windows with automatic openers, 2 louvre vents & a lockable hinged double doors. No shade cloth available. This model is available in a ground mount or a wall mount model in black or white. 12'10" D x 13'2" L/W x 9'8" H at peak with 6' shoulders, 169 sq feet. Made in Belgium.

**EOS Royal-T Ground Model**  
(#EOS T-Regular-W)  
(#EOS T-Regular-B)

**Royal EOS T Stem Wall Mount Option in Black/White** is designed to sit on a short stem wall (built by customer). The shorter sidewall glass allows the door to drop below the frame/wall. Please call Exaco for stem wall height before building as various models exist.  
(#EOS T-Wall-W) or  
(#EOS T-Wall-B)



## The Modern Greenhouse from Janssens

The pent roof design gives this stunning greenhouse an updated appeal that looks great in urban settings and lush gardens.

We generally stock the M34 (see below) but other footprint sizes are available (see p. 11 for details).

In order to support the long glass panes on the roof, the extruded aluminum rafters are twice as thick as the standard Victorian extrusions. Larger units (M34) also have additional cross supports on the roof. The Modern includes hinged double door, roof vents with openers, top hang/push out sidewall windows, and a louvered window. Due to larger roof glass, a forklift or manual offloading of glass will be necessary. Assembly by a skilled handyman is strongly encouraged. Made in Belgium.

**Modern 34 -10'2" x 15', 150 sq. ft.** - hinged double doors, 2 push out windows, 2 louvered w/auto openers, and 2 roof vents w/ openers.





# Janssens Junior Victorian EOS Greenhouses

Junior Victorians with a steeper EOS roof pitch have the same heavy-duty profiles as Royal Victorians but with shorter 5'2" sidewalls. The petite design makes a good fit for smaller urban yards. The single sliding door is located on a gable end. Includes 4mm tempered safety glass, gutters with downspouts, roof decoration, and large bottom frame.



Junior Orangerie

**Junior Orangerie Greenhouse** - Unique T-shaped floorplan with 2 roof windows w/ auto openers and one sliding door. (**#J-ORA**) 10'3" D x 13' L x 8'2" H, 116 sq. feet

**Optional Junior Orangerie Accessory Kit** - 1 seed-tray shelf (along side wall) -7'6" L x 20" W x 4" D and 5-piece shade curtains



J-Vic 24



J-Vic 25

**Junior Victorian Greenhouse J-VIC 23** - Includes 1 roof window with automatic opener, 7'8" W x 10'2" L x 8'2" H, 79 sq. feet (**#J-VIC 24**).

**Junior Victorian Greenhouse J-VIC 24** - Includes 2 roof windows with automatic openers, 7'8" W x 12'6" L x 8'2" H, 96 sq. feet (**#J-VIC 24**).

**Junior Victorian Greenhouse J-VIC 25** - Includes 2 roof windows with automatic openers, 7'8" W x 15' L x 8'2" H, 116 sq. feet (**#J-VIC 25**).

**Optional accessories:** 7'6" long seedtray and shade cloth available. (**#JP2**)

**NEW for 2023! All Junior Victorians Will Include Option for Small Knee Wall**



J-Vic 24 on a small stem wall

In 2023, Junior greenhouse kits will come with additional glass and extrusions that allow you to place the greenhouse on a short 15 3/4" (400mm) high stem wall. It's all included so you can choose the assembly that works for you! Placing the greenhouse on a stem wall also allows the doors to be mounted on the side wall. Wall must be perfectly flush with exterior of the greenhouse base.



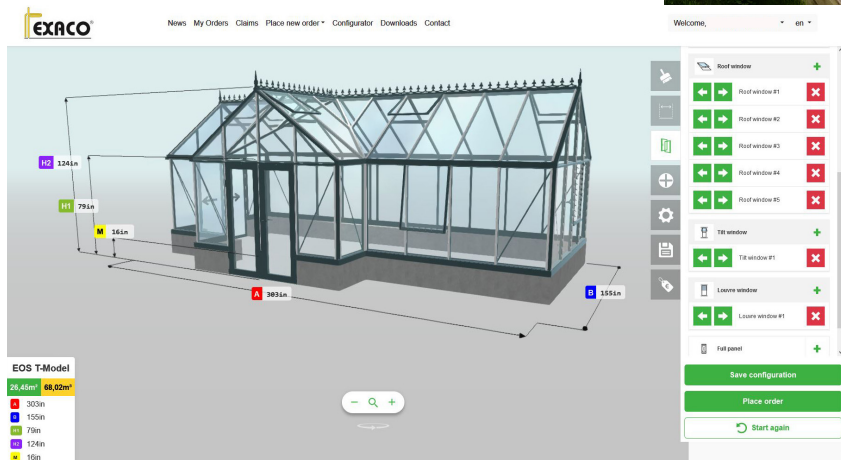
Junior Orangerie on a small stem wall



# Custom Greenhouses from Janssens of Belgium

Now you can design your greenhouse to your vision and space. With our configurator tool, you can choose design style, size, layout, color, door options, window options, glass width, decorative panels, roof pitch, accessories and more. This tool will help explore what is possible and see your dream greenhouse come to life.

Find smaller or larger versions of our stocked models, as well as variations. In the configurator you will also find the lean-to Arcadia and Arcadia Plus models as well as much wider reinforced models like the Cathedral and Gigant.



Please note when you are designing a custom greenhouse, they are special order from Belgium and prices will reflect this. Turnaround time may vary from 4 to 6 months or more. When choosing larger models with custom features, it is recommend to hire a skilled handyman or assembler as these are often much higher level builds. Be aware as the size of the model increases - standard freight and shipping logistics will no longer apply and off-loading equipment may be needed.

Find the link to the configurator design tool on our website at [www.exaco.com](http://www.exaco.com)



For more information and images, please visit [www.exaco.com](http://www.exaco.com)



# Overview of Greenhouse Models

(for other options not shown in this chart,

Type	Greenhouse Size	Square Footage	Panels long?	Panels wide?	Frame Color	Glazing	Polycarbonate Roof Option?	Roof Vents (Openers)	Sidewall Vents/Openers
Royal Victorian	VI 23 7' 9" w x 10'2" l x 8'6" high peak, 6'7" high sidewalls	79	4	3	Fir Green or Black***	4mm tempered safety glass or 10mm TW poly	Yes	2 Vents (1 auto/1 spindle)	1 louver w/ auto opener
	VI 34 10'2" w x 15' l x 9' high peak, 6'7" high sidewalls	150	6	4	Fir Green or Black**	4mm tempered safety glass or 10mm TW poly	Yes	3 Vents (2 auto/1 spindle)	1 louver w/ auto opener
	VI 36 10'2" w x 19'11" l x 9' high peak, 6'7" high sidewalls	200	8	4	Fir Green or Black**	4mm tempered safety glass or 10mm TW poly	Yes	4 Vents (2 auto/2 spindle)	1 louver w/ auto opener
	VI 46 12'7" w x 19'11" l x 9'2" high peak, 6'7" high sidewalls	250	8	5	Fir Green or Black**	4mm tempered safety glass or 10mm TW poly	Yes	6 Vents (4 auto/2 spindle)	1 louver w/ auto opener
	Royal Orangerie (T Shape) 12'10" deep x 15'7" wide x 9' high peak, 6'7" high sidewalls	185	n/a	n/a	Fir Green or Black**	4mm tempered safety glass	No	3 Vents (2 auto/1 spindle)	2 louver w/ auto opener
Janssens Specialty Greenhouses	Royal EOS T (T Shape) Ground or Wall Mount 12'10" deep x 13'2" wide x 9'8" high peak, 6' high sidewalls	169	n/a	n/a	Black or White	4mm tempered safety glass	No	4 Vents (2 auto/2 spindle)	2 louver w/ auto opener
	Retro VI 34 10'2" w x 15' l x 9' high peak, 6'7" high sidewalls	150	6 deco panels	4 deco panels	Black**	4mm tempered safety glass	No	4 Vents (2 auto/2 spindle)	1 push out side window
	Retro VI 46 12'7" w x 19'11" l x 9'2" high peak, 6'7" high sidewalls	250	8 deco panels	5 deco panels	Black**	4mm tempered safety glass	No	6 Vents (4 auto/2 spindle)	2 push out side windows
	Modern 34 10'2" w x 15' l x 8'10" high peak, 6'8" high sidewalls	150	6	4	Black**	4mm tempered safety glass	No	2 Vents (2 auto)	2 push out side windows, 1 louvered w/ auto opener
	Cathedral 15' w x 19'11" l x 12'2" high at peak, 6'8" high sidewalls	298	8	6	Bronze or Anthracite**	4mm tempered safety glass	No	4 Vents (4 spindle)	2 push out side windows, 1 louvered w/ auto opener
Junior Victorian	JVIC 23 7' 9" w x 10'2" l x 8'2" high at peak, 5'2" sidewalls	79	4	3	Black	4mm tempered safety glass	No	1 Vent (1 auto)	none, may be added
	JVIC 24 7' 9" w x 12'7" l x 8'2" high at peak, 5'2" sidewalls	96	5	3	Black	4mm tempered safety glass	No	2 Vents (2 auto)	none, may be added
	JVIC 25 7' 9" w x 15' l x 8'2" high at peak, 5'2" sidewalls	116	6	3	Black	4mm tempered safety glass	No	2 Vents (2 auto)	none, may be added
	Jr. Orangerie (T shape) 10'3" d x 13' l x 8'2" high at peak, 5'2" sidewalls	116	T shaped	n/a	Black	4mm tempered safety glass	No	2 Vents (2 auto)	none, may be added

\*Level 1 - Handy homeowners should be able to assemble w/ customer service assistance if needed. Hinged doors or mounting on a knee wall increases difficulty - skilled handyman or assembler recommended. Level 2 - Challenges exist with aspects such as hinged doors, wall mounts or T shaped models - a skilled handyman/assembler may be required. Level 3 - Professional Assemblers or Contractors are strongly recommended - kit requires special equipment, skills, and adaptation to site build.

\*\*Additional colors within the RAL color system may be special ordered. Additional charges will apply - leadtime will be 3 to 4 months and may fluctuate.



# from Janssens in Belgium

see page 11 and the Riga greenhouse pages)



Doors on standard kit	Alternate Door options?	Irrigation/ Misting system included?	Shelving options?	Shade cloth available?	Wall mount option?	Power Ventilation Options?	Special Freight Delivery Conderations?	Assembly Difficulty
1 Single sliding	yes	yes	Seedtray/top shelf for long wall or 59" slat shelves	yes	yes, with door drop kit***	12" exhaust fan in gable	Curbside standard w/ liftgate****	DIY Level 1*
1 Single sliding	yes	yes	Seedtray/top shelf for long wall or 59" slat shelves	yes	yes, with door drop kit***	16" exhaust fan in gable	Curbside standard w/ liftgate****	DIY Level 1*
2 Sliding - use as 2 singles or one double	yes	yes	Seedtray/top shelf for long wall or 59" slat shelves	yes	yes, with door drop kit***	16" exhaust fan in gable	Curbside standard w/ liftgate****	DIY Level 1*
2 Sliding - use as 2 singles or one double	yes	yes	Seedtray/top shelf for long wall or 59" slat shelves	yes	yes, with door drop kit***	16" exhaust fan in gable	Curbside standard w/ liftgate****	DIY Level 1*
Double sliding	yes	no - can be added	10' seedtray/top shelf for side wing or 59" slat shelves	yes	yes, with door drop kit***	16" exhaust fan in gable	Curbside standard w/ liftgate****	DIY Level 2*
Double hinged	yes	no - can be added	10' seedtray or top shelf, 59" long slat shelves	no	Wall Version available, call Exaco for details	12" exhaust fan in gable	Curbside standard w/ liftgate****	Level 2/3*
Double hinged	yes	yes	Seedtray/top shelf for long wall or 59" slat shelves	yes	not recommended	16" exhaust fan in gable	Curbside standard w/ liftgate****	DIY Level 2*
Double hinged	yes	yes	Seedtray/top shelf for long wall or 59" slat shelves	yes	not recommended	16" exhaust fan in gable	Curbside standard w/ liftgate****	DIY Level 2*
Double hinged	yes	no - can be added	Seedtray/top shelf for either wall or 59" slat shelves	no	yes, with door drop kit***	16" exhaust fan in gable	Additional charges may apply - special equipment or hand unloading may be necessary	Level 3*
1 Single sliding and 1 double hinged	yes	no - can be added	15' seedtray/top shelf for short wall or 59" slat shelves	no	Only by professional contractors	Call to discuss	Additional charges may apply - special equipment or hand unloading may be necessary	Level 3*
1 Single sliding	Single hinged upgrade available	no - can be added	Seedtray/top shelf for gable wall or 59" slat shelves	yes	2023 model includes option for 15.75" high wall	12" exhaust fan in gable	Curbside standard w/ liftgate****	DIY Level 1*
1 Single sliding	Single hinged upgrade available	no - can be added	Seedtray/top shelf for gable wall or 59" slat shelves	yes	2023 model includes option for 15.75" high wall	12" exhaust fan in gable	Curbside standard w/ liftgate****	DIY Level 1*
1 Single sliding	Single hinged upgrade available	no - can be added	Seedtray/top shelf for gable wall or 59" slat shelves	yes	2023 model includes option for 15.75" high wall	12" exhaust fan in gable	Curbside standard w/ liftgate****	DIY Level 1*
1 Single sliding	Single hinged upgrade available	no - can be added	Seedtray/top shelf for gable wall or 59" slat shelves	yes	2023 model includes option for 15.75" high wall	12" exhaust fan in gable	Curbside standard w/ liftgate****	DIY Level 2*

\*\*\*Please call Exaco or consult manual before building wall. If greenhouse has sliding door, stem wall must be flush with the base of the greenhouse as door/s slide along the outside of the greenhouse.

\*\*\*\*Standard curbside delivery includes a freight truck with a liftgate and pallet jack. Driver will need help with long narrow framing cartons. Special circumstances such as low trees, remote areas, dirt roads, driveway deliveries, and flatbed/forklift delivery requests may incur additional charges.



# Greenhouse Accessories

V= works in Janssens' Victorians; R= works in Riga models; U= Universal

**Victorian bundled accessory kits (V)** are available, however all accessories may be purchased separately if desired. Accessory Kit includes: Top Shelf, Seed Tray, and Shade Cloth.

**Shade Curtains (V)** for JVIC24, JORA, VI23, VI34, VI36, VI46, and Royal Orangeries (unavailable for EOS Royal-T).

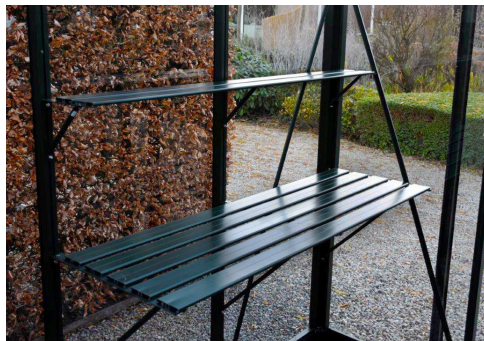


**Seed Tray Shelves (V)** are 20" W x 4"D, length is determined by the greenhouse. Adjustable height. Available for Junior Victorians, VI23-46, Royal Orangeries, and EOS Royal-T.

**Narrow Top Shelves (V)** 4" W, length is determined by the greenhouse. Adjustable height. Available for Junior Victorians, VI23-VI46, Royal Orangeries, and EOS Royal-T.

**Victorian Slat Shelving (U)** Flexible & cost-effective - fits a variety of greenhouses and/or positions. Designed to be able to run them end to end for longer stretches. 59" long.

- Green 2-Slat - 9" W (#TAB2G)
- Black 2-Slat - 9" W (#TAB2B)
- Green 5-Slat - 21" W (#TAB5G)
- Black 5-Slat - 21" W (#TAB5B)



## Victorian Windows:

- **Additional Roof Vent (V)** Includes glass for underneath for Royal Victorians
- **Ventomax Roof Vent Auto Opener (U)** with piston



- **Manual Spindle Opener (V)** high-quality threaded manual opener



- **Louvered Window (V)** Add to any sidewall for extra ventilation. Includes glass panel for underneath for Royal Victorians. Junior Victorians will have a lexan panel.
- **Louvre Lexan Cover (V)** Add this to your louver window in the winter.
- **Louvered Window Sesam Liberty Auto Opener (V)** with piston.



**Misting System (U)** 14' long for a 20' greenhouse - cut shorter for smaller houses. Has 5 misters. If shipped UPS/ Fed Ex, it comes in 2 pieces w/ connector. (#VI BER)

## Victorian Doors:

- **Single Sliding Door (Royal VICs only)** - Add to any sidewall (except corners) for 27.5" W door opening.
- **Second Sliding Door (Royal VICs only)** - Add a second door to the first for a double opening of 56 7/8" W



**Lowered Threshold for Sliding Door (V)** Soil profile must be cut for installation. Threshold will be 1 1/2" high.



**Hinged Double Door (Royal VICs only)** New low threshold - soil profile must be cut to install.

**Door Extension Kit/ Door Drop Kit (V)** This kit is needed to bring the door to ground level when the greenhouse is placed on a stem/knee wall. Additional glass for above the doors is not included and must be purchased locally.

## Deco Scroll Supports (V)

For additional structural support if standard factory kit is not considered enough. Usually installed in a set of three: one set at the ridge and one at each gutter. May interfere with shadedcloth.





# Greenhouse Accessories (Cont'd)

V= works in Janssens' Victorians; R= works in Riga models; U= Universal

## Fly Screens for Victorian Greenhouses

### Sliding Door

The all-new fly screens by Janssens. Options for the roof vents, louvre window, pop-out windows on custom units, and a sliding door. They include brushing to further prevent flies and other small insects from getting to your garden. They come in green (RAL6009) and black (RAL9005). Screen door is mounted on the inside of the greenhouse.

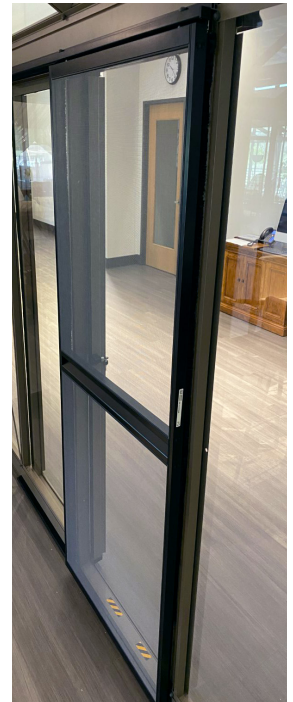
### Roof Window



### Pop-out side Window



### Louvre Window



## Ventilation/Heating

**Exhaust Fan(U)** - use with the BioGreen thermostat. Mount at high location in the gable end. Has 9' plug-in power cord.

- **12" Exhaust Fan** for RIGA 2, 3, 4, J-Vics, and VI 23; Requires 12.25" x 12.25" opening. (**#VES12C**)
- **16" Exhaust Fan** for RIGA 5, VI 34-46; Requires 16.25" x 16.25" opening. (**#VES16C**)
- **20" Exhaust Fan** for RIGA XL series. Requires 20.25" x 20.25" opening. (**#VES20C**)



**Lexan Panel (V)** replaces a glass pane to install fan or vent in the gable end of the Victorian greenhouse. High-quality UV-protected - can be cut with a jigsaw. (**#Lexan**)

**Motorized Intake Shutter Vent (U)** use with VC115-C thermostat. Mount in upper corner of lowest front panel. Has 9' plug-in cord.

- **16" Intake Shutter** for RIGA 2, 3, 4; Requires a 16.25" x 16.25" opening. (**#VRSG16A-PSC**)
- **20" Intake Shutter** for RIGA 5, VI 34-46. Requires a 20.25" x 20.25" opening. (**#VRSG20A-PSC**)
- **24" Intake Shutter** for RIGA XL series. Requires a 24.25" x 24.25" opening. (**#VRSG24A-PSC**)

**Bio Green (Germany) Digital Thermostat (U)** - specifically designed for use in greenhouses - power cord with 3-prong plug. May be used to heat or cool greenhouse. Works with appliances up to 1500 watt. Water resistant . 5 ft long temperature sensor cord.



**Bio Green Heater - Palma (U):**

German designed high quality greenhouse space heater. Electric 110-120 volt/ 60 Hz heater; 10 settings (32°-185°F), 1,500 watts/5120 BTU (10 amp). Comes with 10-foot 3-prong power cord. Size: 11" x 8" x 12.5" h; perfect for the RIGA 2-5 and J-Vic and VI 23-36 units. Thermostat Range: 32-185° F Stainless Steel Housing. Water resistant.



**Infrared Industrial Heater (U)** Portable electric 208-240V (4200-5600 watts) heater. Full power produces ~18,500 BTU. 6' heavy-duty cord with NEMA #6-30P plug. Requires 30 AMP breaker. 12" x 12" x 16" h. Perfect for the RIGA XL and VI 46 units. (>200 sq.ft.) (**#DR988**)



# Greenhouse Accessories (Cont'd)

V= works in Janssens' Victorians; R= works in Riga models; U= Universal



**Wheelbarrow Access Plate (U)** Durable Solid Rubber - 19.3" W x 12.3" L (each side) x 4" H in the middle (#VI RIJ)

## Illumitex Eclipse GEN2 N Bar LED Grow Light with F3 Spectrum (U)

- This slim 4' waterproof design is damp-rated and dust-resistant.
- Can be daisy-chained together in runs of up to 15 fixtures.
- 12 LEDs in F3 Spectrum produce up to 104 PPF for the fastest germination & flowering. Ideal for vertical farming, cannabis and hobby growing
- Install 12"-36" above the plant canopy
- 5 year warranty

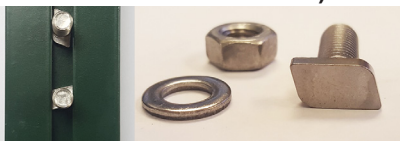
Available with a 9' power cord (#GEN2N-PC) or a cord to daisy chain (#GEN2N).



**Light My Shed 4\* (U):** Solar powered LED light: 3 watts/ 250 Lumens (up to 4 hrs on a sunny day). Uses a Ni-MH Battery - 4.8 V - 2000 mA. Light dome is 6"D x 7"H, 9' wire between panel and bulb. Limited 2-year warranty. (#GS-16B)



**T-Bolts\* (U):** 20 Stainless Steel hammerhead bolts/nuts. Unique head can be inserted into profile channels, then turned 90° to attach accessories once the greenhouse is assembled. (#Riga T-Bolts or #Victorian T-Bolts)



**Additional Roof Window for RIGA 2s/3s/3/4s/4/5 (R)**- to be added as greenhouse is assembled - polycarbonate sidewall must be trimmed to obtain poly window piece. Includes opener. (#RIGA-RoofWindow)

**RIGA Univent Automatic Window Opener (R)** with quick release "arm" - allows opener to be disconnected in adverse weather conditions. Non-toxi oils in piston expands starting around 72°F. (#RIGA AutoOpener)

**Replacement Piston for Automatic Window Opener (U) (#Piston)** - For Univent, Ventomax, or the Sesam Liberty Opener.

**Roof Window Wind Restraint System (U)** - Two 15" stainless steel cables with nuts & bolts - for 1 roof window. (#RIGA Wind 1)



**Sash-Lock with screws (U)** - recommended to shut roof windows and top half door (#Sash-Lock)

**Adjustable Stainless Steel Hooks (set of 5) (U)** - T-bolt head easily installs into channels to allow for hanging plants, lights etc. (#RIGA Metal Hooks)



**Plastic Hooks (set of 10) (U)** - Easily installs in channels to hang growing wire or rope. (#RIGA Plastic Hooks)

**Heavy Duty Seed Trays (U)** - 24" x 16" x 3.5" D (#RIGA Shelf Planter Boxes)



**Riga Shelves (R)** - Aluminum framing with polycarbonate horizontal surface. Supported with angle struts from underneath. Shelf length to fit all Riga, Riga S and Riga XL. May be trimmed if full length is not desired. Adjustable Height.

**Narrow Top Shelf - 10" W**  
**Bottom Table Shelf - 25" W**



**Riga Foundation Frame (R)** - To avoid concrete work to anchor. Attached to soil profile and buried in a trench to anchor your Riga greenhouse.

Riga and Riga S is C- shaped extrusion Riga XL series is an I-Beam shape

**Door Extension kit for RIGAs (R)** to raise greenhouse 20" on stem wall:

- **RIGA Door Ext S-** Riga 2s/3s/4s
- **RIGA Door Ext** - Riga 3/4/5
- **RIGA XL Door Ext** has parts for 2 doors



**RIGA XL Pro Kit (R)**- Add for a "complete" starter kit: 1) Top & Table Shelf; 2) 3 sets of professional LED grow lights (46" L); 3) 1 24" intake shutter vent; 4) 1 20" exhaust fan; 5) thermostat for vent & fan; 6) 17,500 BTU 220 V heater; 7) 5 heavy duty seed trays; 8) 10 stainless steel hooks & 10 heavy duty plastic "hooks". Also includes: Facilitation Kit

**RIGA XL Assembly Facilitation Kit (R):** 25' metric tape measure, 10mm socket wrench, 10 mm open wrench, 2 20' J-hook ratchet straps, window restraint cables, 2 tubes Boss 399 silicone caulk, permanent marker

**Boss Clear Neutral Cure Silicone Caulk (Colors 400-157)\*:** to seal between polycarbonate and frame. Made in USA. (#Boss)



# Hoklartherm Riga & Riga XL Greenhouses

- German engineering combines with superior materials to produce a commercial quality greenhouse for year-round growing
- Extra-wide 8-10mm twin wall (Riga) and 16mm triple wall (XL) polycarbonate glazing for advanced insulation & strength
- Exceptional wind & snow resistance due to the unique shape
- Do-It-Yourself assembly with US-based customer support 7 days/week plus animated assembly video
- Oversized roof windows with automatic openers and a large Dutch-style door(s) with keyed lock
- Flexible installation and anchoring options allow customization
- Structural certifications and drawings are available for permits for most models.
- Optional accessories: shelves, hooks, foundation, misting system, heater, exhaust fan/intake vent, drop door kit for stem wall installation, pro LED grow lights and more. See accessory page for details.



Riga XL 6 in Canada



Cool weather greens growing happily inside a snow-covered Riga XL



Riga XL 9 with drop door kit on a stem wall



Riga XL 8



**Q: How do the automatic window openers work?**

A: The automatic opener is powered by a piston filled with paraffin oil. As temperature creeps above 72 degrees, the paraffin begins to expand and pushes out the piston rod - causing the window to open. No electricity needed!

*"Winters in Maine are long and cold. Some lucky people get to be snowbirds and fly south to find warmth and lush green plants. But for the rest of us... it can be rough. My RigaXL has been my salvation. It is my sanctuary from the Wintertime Blues as well as the source of superb salads, tomatoes, peppers and herbs right up until it's time to get seedlings started in Spring. A series of severe storms that crushed neighbors' greenhouses over the past several years did not affect it at all. I am 110% satisfied with it - the only problem is that now I want another one!!"*  
- Miriam, Riga XL 6 owner



# Riga Greenhouses

Available in two widths, Riga greenhouses have superior support and thick twin-wall polycarbonate glazing (8mm poly side walls/10mm poly gable ends) for better insulation. The large roof vents, big rear window, and split barn-style door (30" wide x 79" high) with lock provide plenty of ventilation. The unique shape allows snow to slide off and wind to blow over, making it suitable for a wide variety of climates and weather. Each subsequent model number represents an additional section of polycarbonate panels.



## Riga S Series (7'8" width)

**Riga 2s** - 1 roof window with auto opener  
7'8" W x 7' L x 7'1" H, 54 sq ft (#RIGA IIIs)

**Riga 3s** - 1 roof window with auto opener  
7'8" W x 10'6" L x 7'1" H, 81 sq ft (#RIGA IIIs)

**Riga 4s** - 2 roof windows with auto openers  
7'8" W x 14' L x 7'1" H, 108 sq ft (#RIGA IVs)



Riga 5 on a Stem Wall with a Door Extension Kit



Riga 5 in Alaska



Riga 4 anchored with Foundation Frame

## Riga Series (9'8" width)

**Riga 3** - 1 roof window with automatic opener  
9'8" W x 10'6" L x 7'7" H, 102 sq ft (#RIGA III)

**Riga 4** - 2 roof windows with automatic openers  
9'8" W x 14' L x 7'7" H, 135 sq ft (#RIGA IV)

**Riga 5** - 4 roof windows with automatic openers  
9'8" W x 17'6" L x 7'7" H, 165 sq ft (#RIGA V)



Produce grown in a Riga 3s



Riga 4 with a drop door kit on a stem wall





Growing big in a Riga XL



Riga XL 6 in heavy snow



Riga XL 6  
mounted to wooden deck

## Riga XL Professional Series

German engineering has created an amazingly rugged, heavy-duty grower's greenhouse. The Riga XL's unique shape stands up to extreme wind and snow loads, while the 16mm triple wall polycarbonate offers superior insulation for year round growing. Large roof window vents (37.5" W x 39.5" H) provide good ventilation. Two locking split barn-style doors (37.5" W x 74" H) provide access as well as ventilation at the front and rear of the greenhouse. The Riga XL may be anchored to a concrete perimeter wall or slab, raised on a stem wall with a drop door kit, or may also be anchored directly in the ground with a foundation frame (no concrete needed!). Additional accessories are available including shelves, benches, hooks, fans, vents, heaters, grow lights and more - see our pricelist for details.

Please contact us if you are in an area requiring a permit for building. We have structural certifications and permit sets available. We also have a extreme high load kit available for the Riga XL if needed. See accessory page for more details.



Riga XL 8

The Riga XL is available in a variety of sizes - each model number adds an additional section of polycarbonate in length.

**Riga XL 5** - 4 roof windows with automatic openers  
14' W x 16'5" L x 9'10" H, 231 sq.ft. (#Riga XL5)  
Optional Foundation Frame (#RIGA XL 5 Base)

**Riga XL 6** - 4 roof windows with automatic openers  
14' W x 19'10" L x 9'10" H, 280 sq.ft. (#Riga XL6)  
Optional Foundation Frame (#RIGA XL 6 Base)

**Riga XL 7** - 6 roof windows with automatic openers  
14' W x 23' L x 9'10" H, 322 sq.ft. (#Riga XL7)  
Optional Foundation Frame (#RIGA XL 7 Base)

**Riga XL 8** - 8 roof windows with automatic openers  
14' W x 26'3" L x 9'10" H, 368 sq.ft. (#Riga XL8)  
Optional Foundation Frame (#RIGA XL 8 Base)

**Riga XL 9** - 8 roof windows with automatic openers  
14' W x 29'6" L x 9'10" H, 413 sq.ft. (#Riga XL9)  
Optional Foundation Frame (#RIGA XL 9 Base)



## Cold Frames and Raised Beds

### BioStar 1500 Premium Cold-Frame (#Biostar 1500)

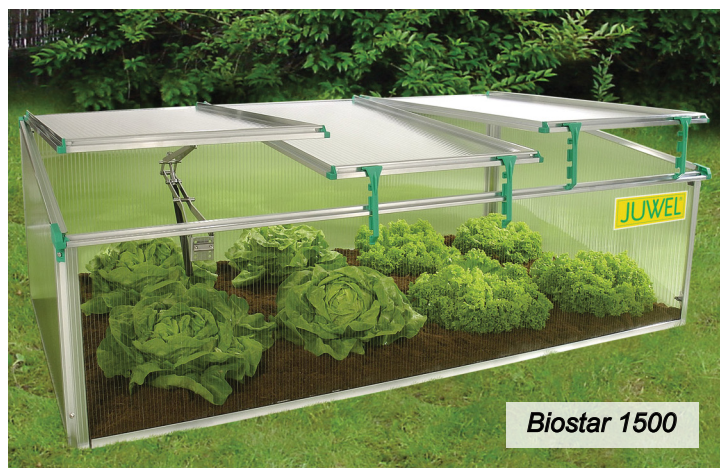
8mm twin-wall polycarbonate for strength and better insulation. Includes 1 paraffin automatic opener. 5-year warranty. 59"L x 32"D x 16"/20" H

### BioStar 1000 Premium Cold-Frame (#Biostar 1000)

8 mm twin-wall polycarbonate for strength and better insulation. Screen protects against bugs, flies or heavy rain during summer. 5-year warranty. 40" L x 30" D x 17.5"/20.5" H

**Year-Round Cold-Frame (#Year-Round)** - For cold or warm weather. In summer, the 4mm twin-wall polycarbonate cover slides out to reveal a screen to protect from bugs, wind, and hail (screen comes assembled). 2-year warranty. 50" L x 23" D x 12" & 16" H

**Easy-Fix Double Cold-Frame (#CF120/100)** - 4 mm twin-wall polycarbonate to start your garden early. Lid on each side. Easy to assemble. 2-year warranty. Size: 48" L x 40" D x 12"/16" H.



## Kombi Raised Beds - Customize to Your Needs!

The Juwel "Timber" Raised Bed Coldframe combination is a perfect solution for tending a small garden while maintaining a raised position.

Enjoy an extended growing season by being able to begin growing in late winter and harvest in late fall. The cold frame and the base both have thermal properties that help capture the maximum amount of warmth to start and sustain growth longer than normal. Includes two ventilator latches to open the cold frame lid in four different positions.

Easy-to-assemble injection molded block wall structure is BPA-free high-grade polyethylene in a UV-protected Nordic weathered grey color. Raised bed is 51" x 24" x 24" H, cold frame is 50" x 12" x 15.75" H. Panels are 4mm twin wall polycarbonate. Made in Austria. Product is Patented. (5-year warranty) (#Combi RB+CF 20828)





# Modern Raised Beds

## Ergo Quadro Modular Raised Beds

### Create a Customized Garden Arrangement!

Ergo Quadro Raised Beds come in a variety of shapes and sizes to be combined and stacked to fit your vision and height needs. The attractive wood textured pieces are made from BPA-free polypropylene. Ergonomically designed for gardening at a comfortable height, the Ergo Quadro allows you to make a beautiful and customized focal point. From Graf in Germany, 5-year warranty.

**Small (square)** 24" x 24" x 10" H (#645115)

**Medium (rectangle)** 24" x 31.5" x 10" H (#645116)

**Large (square)** 31.5" x 31.5" x 10" H (#645117)

**\*\*Click multiple sets together for additional height!\*\***



## Balcony Raised Bed Planter

### Create a Customized Garden Arrangement!

This textured wood-look planter works well for a variety of settings. Optional protective cover available to protect young plants from cold or heavy watering (water drips though top channels slowly to the plants.). Drainhole at bottom allows hose attachment to direct water (not included, holes must be drilled out). Planter interior is 27" L x 12" W x 10" D.

**Balcony Raised Bed Planter** 12.8 gal capacity, Assembled planter is 29.5" W x 14.5" D x 26" H. (#645140)

**Protective Cover** - 29.5" L x 14.5" W x 8.5" H (#645141)

**SET: Balcony Raised Bed Planter w/Cover** (#645140/1)



## Hexagonal Modular Raised Beds

### Extend the Height or Length!

Combine sets to make it your own! Basic set (#645100) consists of six 21.5" L x 10" H panels. The extension set (#645101) lengthens the basic set by 21.5". Beautiful and sturdy wood-texture components are UV and moisture-resistant- no sealing or painting needed! Made of recycled BPA-free plastic in Germany. 5-year warranty.







## The Bokashi Sensei

The new, sophisticated Bokashi Sensei kitchen compost bin enables simple, clean and odorless fermentation to produce organic liquid plant fertilizer for your household plants and garden. The Sensei uses a Bokashi bran full of beneficial microorganisms to speed the fermentation of the organic waste.

**Usable capacity:** approx. 3 gal. (11 L)  
**Diameter** 10.6" W x 22.4" H (27 cm / Height 57 cm)  
**2 years warranty**

Add organic kitchen daily into the Sensei, then sprinkle with bokashi bran to aid fermentation. Replace the cover and squeeze down the kitchen waste with the handle. Drain compost tea weekly from the spigot at the bottom. Once drained, this compost tea should be diluted with water (ratio of 1:30) and can be used as a liquid fertilizer for your plants. After 3 to 4 weeks, the fermented solids are emptied from the removable inner container into a city compost bin, a backyard composter, or even buried in a trench in the yard. The new Bokashi Sensei kitchen compost bin by JUWEL offers the convenient and hygienic solution for the disposal of organic waste.

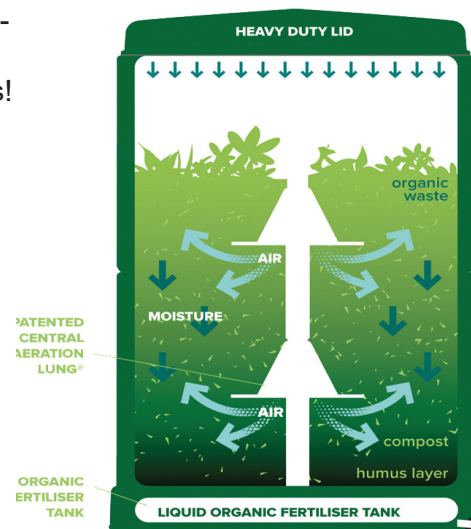


## The Aerobin Compost Bin

**Aerobin Insulated Composters** - The very best consumer composter on the market today! Patented aeration lung system makes it quick and easy - no turning required! Just drop kitchen and yard waste at the top and later remove through the bottom access doors. Insulated walls and lid.

To support year-round aerobic composting. Collect leachate at the bottom to dilute for compost tea. Now in two sizes!

**Aerobin 200 (Grey)**  
 20" W x 20" D x 46" H (#Aerobin 200)  
**Aerobin 400 (Green)**  
 29" W x 29" D x 47" H. (#Aerobin 400)



New Leachate Hose to make draining your leachate from the bottom of your Aerobin



# BPA-Free Compost Bins

- 1) **Ms.Tumbles® Compost Tumbler:** 130 liters/35 gal. Ball tumbler on a sturdy stand - with leachate drain hose with control valve. This new design tumbler is perfectly suited for small yards and for people not wanting to mix the organic waste in their traditional compost bins. Simply turn this bin and waste is mixed easily. New larger access door for easy loading and unloading. Made from recycled plastics. Does require regular draining to prevent overflowing. Made in China.
- 2) **Helix Turning Tool:** The perfect hand tool to turn the organic material in an ordinary "4-walls and a lid" compost bin. Size: 44" tall x 4" dia. Comes with 2 "loose" black grips to make turning easy. Simply open the lid of the bin & screw down the Compost Tool and pull tool back up and insert again. Made in China chrome coated steel.
- 3) **Mr.Spin® Compost Tumbler:** 160 liters/43 gal. Two compartments keep fresh organic waste from older matter - separation makes better compost. This popular tumbler is easy to use and well-suited for small yards. Simply turn and waste is mixed easily. Includes a thermometer. Black access doors and metal stand. 22.8" L x 22.4" W x 37" H. From China. (#Mr. Spin)
- 4) **AeroQuick Composter** - Made from 5mm thick heavy-duty BPA-free plastic to last 10 to 15 years. They are 50-100% thicker than similar composters - strong enough to stand on! Comes with locking lid and two bottom access doors to remove compost. Open bottom. Available in 2 sizes. From Juwel of Austria.  
**AeroQuick 187 gal.** (#AQ 187) - 37" x 37" x 43" H  
**\*Includes soil grid\***  
**AeroQuick 77 gal.** - (#AQ 77) - 28.4" x 28.4" x 31.5"H
- 5) **Aeroplus 6000 3-stage composter.** A heavy-duty, easy-to-operate three stage composter. Simply turn the crank handle and the waste drops from the 2nd to the 3rd chambers, in the process both chambers get mixed. The top chamber is relatively airtight designed to keep flies out. From Juwel in Austria. Capacity: 140 gals.  
 Size: 31" x 31" x 43" H. (#Aeroplus 6000)
- 6) **ECO-Master Composter** - Basic composter in black, side walls snap together, large top lid, 2 doors at the bottom. Open bottom. Made from 100% recycled PP, 2.1 mm thick walls. From Graf in Germany. Available in two sizes.  
**Eco-Master 300 (#628000)** - 80 gal. black, 24" x 24" x 35.5" H.  
**Eco-Master 450 (#628001)** - 120 gal. black: 27" x 27" x 40" H.



## Q: Why do many of your composters have an open bottom?

A: Microorganisms help digest your compost and make it richer. An open bottom allows the compost to have contact with the ground so these beneficial microorganisms can assist you in composting. A soil fence accessory is available to prevent tunneling rodents from reaching your compost.



# BPA-Free Compost Bins

**ECO-King Composter** - Basic composter in green, a step up from the Eco Master, side walls snap together, large double lid, two latching access doors at the bottom. Open bottom. Made from 100% recycled PP, 2.3 mm thick walls. Size: 28" x 28" x 33" H. From Graf in Germany.

**ECO-King 400 (#627003)** - liters/110 gal. green, 28" x 28" x 33" H:

**ECO-King 600 (#627001)** - liters/160 gal. green, 31.5" x 31.5" x 37.5" H



**Thermo Wood Composter** - The latest high-end compost bin from Graf, it looks like real wood grain. The Thermo Wood has a very large top opening covered with two hinged lids and features two bottom access doors on opposite sides. The side walls have hidden air holes for better ventilation and compost production.

The 4.2mm thick PP plastic (mostly recycled) features Thermelon (air pockets for better insulation). This open-bottom composter also includes a Soil Grid to prevent tunneling rodents. Size: 31.5" x 31.5" x 39.5" H - 40 lbs. (#626051)



**Thermo King 900** - 240 gal. giant composter. Made with Thermelon with air pockets for better insulation and 4.2 mm thick PP plastic (mostly recycled material). The Thermo King is stronger and more durable than standard composters. Side walls hook together. Very large top loading doors and two large bottom access doors for easy compost removal. Size: 40" x 40" x 40" - 240 gal. From Graf in Germany. (#ThermoKing 900)



**Thermo Star 1000** - 267 gal. Jumbo Composter. Made with Thermelon with air pockets for better insulation and 4.5 mm thick PP plastic (mostly recycled material). This is a step above the Thermo King - the six side walls are held together by thick rods. Has top-loading doors and two bottom wall sections that can be opened for easy compost removal. Size: 50" x 50" x 41" H - 267 gal. From Graf in Germany. (#Thermo Star 1000)



**2-N-1 Kitchen Compost Bucket** - Perfect size to sit on the kitchen counter. Lift-off lid comes with clear rubber gasket to limit odors. Use handle on inner plastic bucket to carry scraps to your composter. Available in 5 colors: White (#CPBW01), Oatmeal (#CPBS01), Soft Green (#CPBG01), Matte Silver (#CPBS04) or Stainless Steel (#CPBS03) Size: 10" W x 7.5" D x 10" H, 1 gallon capacity.

**ECO 2000 Kitchen Compost Pail** - Our #1 item! Hinged lid with replaceable carbon filter. Place on counter or hang with 2 screws/hooks (not incl.) inside a cabinet. Made in Canada. 2.4 gal., 8.5" x 9" x 11"H. (#ECO2000)

**ECO 2500 Replacement Filters for ECO 2000** - Replace carbon filters every three months. Pack of 3 filters. (#ECO 2500)



**Compostable BioBags** - Use to collect kitchen scraps, then drop in an outdoor compost bin.



# Fiber Clay Birdbaths

Lightweight, attractive, and very durable. Made from 70% clay, 25% recycled polyester resin and 5% non-toxic binders. Can withstand temperatures down to 0° F.

**Marbled Florentine/Scroll Birdbaths** Elegant high-gloss basin and decorative pedestal provide a beautiful accent to any garden. Three pieces push together. Size: 20" D x 20" H, Basin is 2 5/8" deep.

**A. Florentine Marbled Birdbath in Ivory/Black - (#FM-0203B)**

**B. Florentine Marbled Birdbath Green (#FM-0203G)**

**C. Scroll Vine Marbled Birdbath Red - Decorative scroll trim on basin and pedestal. (#FM-0082)**



**Textured Birdbaths** feature taller pedestal and glossy basin. Size: 18" D x 23.5" H. Basin is 2 3/4" deep.

**D. Two-Shade Blue Birdbath (#FM-2475B)**

**E. Two-Shade Green Birdbath (#FM-2470G)**

**F. Blue Gray Birdbath (#FM-0447)**

## Victorian Dusty Rose Birdbath

Elegant matte porcelain-look basin with decorative relief scroll detailing on rim. Pedestal also features decorative fleur de lis pattern. Size: 20" D x 20" H, Basin is 2 5/8" deep.



## Tiered Fountain in Pastel Green

Includes 12 Volt submersible pump with 12' electric cord (for 110 volt grounded outlet). Four pieces screw together during assembly. The pedestal is hollow and can be filled with sand to increase stability in heavy wind areas. Base is 11" dia. Large basin is 25" high x 22" dia. x 4" deep (2 gal. capacity). Top basin is 32" high x 9" dia. Overall height is 36" tall. (#FM-300)



## Bird Bath with Solar-powered Fountain Pump

Create a haven for your feathered friends with this bird bath with solar powered fountain. Looks like concrete, yet the lightweight fiberclay makes it easy to handle and move around as needed. Basin is 2 5/8" deep (1.25 gallons) perfect for a variety of birds. Easy to assemble - three pieces screw together. Center section can be filled with sand for added stability in high wind areas. Frost resistant. 18" diameter, 24" high.

A. Aged Cement with square base

B. Aqua Blue with round base





# Lightweight Fiber Clay Planters

## Q: What is Fiber Clay?

A: Fiber Clay is made from 70% finely pulverized clay/earth, 25% recycled polyester resin, and 5% non-toxic organic binders. Fiber clay is injection molded to create attractive and detailed pieces that are durable and lightweight. These planters make it easy to move plants indoors during freezing temperatures if desired. Fiber Clay is safe outdoors to 0° F.



**Speckled White Medium Large Round Planter** - Larger size works for a wide variety of plants. Includes rubber push-out plug in bottom of the bowl so planter can be used either indoors or outdoors. Made from FiberClay. Size: 13" tall / 17" dia., 10 gallons (#FM-WP17)



**Speckled Gray 3-Piece Planter Set**  
Lightweight and easy to move as needed. Includes rubber push-out plug in planter for indoor or outdoor use. Made from FiberClay.  
(#FM-Pot3G)

Set includes 3 sizes:

- 8.5" dia x 7" h; 1.25 gallons
- 11.5" dia x 8.75" h 2.5 gallons
- 14.25" dia x 11.5" h 5.5 gallons

**Woven Medium Square Planter (set of 2)** - Washed sandstone with rubbed tint to accent woven detailing. Includes rubber push-out plug in planter to allow indoor or outdoor use. Made from FiberClay. Size: 11.5" x 11.5" x 9.5" h. 3.5 gallon capacity. (#FM-SBWP)



**Sandstone Ringed Medium Planters (set of 2)** - Neutral washed sandstone color to coordinate well. Includes rubber push-out plug in bottom of the bowl so planter can be used either indoors or outdoors. Made of Fiber Clay. 13.5" dia. / 11.5" tall, 4.5 gallon capacity. (#FM-RRP)





## Fiber Clay Planters and Urns

Lightweight, attractive, and very durable. Made from 70% clay, 25% recycled polyester resin and 5% non-toxic binders. Can withstand temperatures down to 0° F.

**Speckled Gray Hanging Planter** Round hanging planter includes rubber push-out plug for indoor or outdoor use. 13.5" dia x 6.75" h, 3 gal. capacity. | Three ropes - each 16". (#FM-HBG13)

**High Gloss Marbled Planters** Deep gem-like colors make these marbled planters a handsome addition to any home or outdoor area. Rubber push-out makes them ideal for indoors or out. 11" dia. x 13" h, 4 gallon capacity. Available in green, red, or blue.



**Modena Urns** - Comes in 2-pieces which screw firmly together. Size: 16" D x 18" H

**A. Modena Urn Washed Finish in Dark Gray/Black** - Attractive detailing and a nice washed finish make an elegant statement. (#FM-012)

**B. Modena Urn Washed Finish in Sandstone** - Relief detailing on planter and base is accented by the washed finish. (#FM-0071)

**Imperial Urns** - Small lightweight urns make it easy to move plants to safety during winter freezes. 4-pieces push securely together. Size: 11.5" D x 14" H; 1 gallon capacity; Inside: 7" dia x 7.5" deep. Includes rubber push-out plug in bottom of planter for optional drainage.

**C. Imperial Urn in Washed Finish in Gray** - Small urn planter. Attractive and lightweight (#FM-013)

**B. D. Imperial Urn- set of 2 -Antique Copper** - Small urn with an appealing rubbed antique copper finish. (#FM-UrnC)





**Due to high shipping container costs, we are not currently stocking Graf rain barrels we hope to offer them soon! Please feel free to reach out if you are interested in these rain barrels.**

### What makes GRAF rain barrels better?

- ▶ Water quality - closed top and multi-layer construction protects your rainwater from sunlight so there is no water degradation/algae growth.
- ▶ UV stable, they are made from the highest grade of BPA-free plastic.
- ▶ All tanks include a spigot at a perfect height for a watering can.
- ▶ Included Universal Downspout Connection Kit (rectangular) makes installation easy.
- ▶ Weather resistant and winter proof - leave tap open in freezing weather.
- ▶ Closed system to keep out mosquitoes.
- ▶ Made in Germany and come with a manufacturer's warranty



### Calypso Trellis Planter from Germany

Calypso Planter with Trellis - This unique planter has a built-in 2.5 gallon water reservoir with double bottom for self-watering. The water level indicator lets you know when to water! Includes 4 wheels, 2 lock to keep the planter in place. Trellis provides privacy and growing support. May be used outdoors or indoors (does not leak). Assembled size: 31"W x 13.5" D x 53" H. Made in Germany. Available in Green (#1.416Green), White (#1.416) or Anthracite Grey (#1.420Grey).







## Clothes Dryers from Juwel of Austria

Juwel, winner of multiple Red Dot Design Awards, presents innovative and easy-to-use clotheslines for indoor and outdoor use. Juwel makes it simple to dry delicates, comforters, and other laundry naturally. Anodized aluminum makes the dryers easily-portable, but also very strong, durable and corrosion-resistant. The compact form and versatility make them ideal for small spaces and urban living.

### Evolution 600 Lift Rotary Clothes Dryer

Our highest quality clothes dryer with adjustable height! 167 feet of line hold up to 3-4 washing machine loads. The clothesline opens and folds up with easy one-hand lever assisted by a gas powered pump. The cover even retracts automatically during opening to keep lines clean between uses. The height adjusts to 6 different levels between 5'3" and 5'11". Comes with ground socket for simple installation. 5-year warranty (excludes cover) (#Evolution 600)



### Novaplus 500 Rotary Clothesline

High-quality clothesline with 140 feet of line to hold up to 2-3 laundry loads. The Novaplus opens and folds up easily with a one-hand lever. The cover retracts automatically during opening to keep lines clean between uses. Comes with ground socket for simple installation and 5 year warranty (excludes cover). Open: 76" x 76" x 80" H. (#Novaplus Easy 500)



Novaplus or Evolution 600 Replacement Cover - Easy to Install! (#NovaPlus Cover)

**Universal Ground Socket**  
Holds most umbrellas and/or rotary clotheslines, volleyball nets, etc. Great for beach umbrellas. Adjustable rings allow for perfect diameter fit. Comes with aluminum "handle" to drill socket in to the ground. Ends up perfectly flush with the ground. Lawn mower safe. Fits: 5 different tubes 1.25" - 2.2" diameter. (#30026)

### Twist Free-Standing Dryer

Folds double to carry outside while loaded and collapses completely (3" wide x 2" deep) to hang on included wall bracket. 45' of line. The Twist may also be used over a tub against the wall. Made from anodized aluminum and polyamide plastic parts; strong but very lightweight. (#Twist)



For more information and images, please visit [www.exaco.com](http://www.exaco.com)



## The Rondo from Hoklartherm



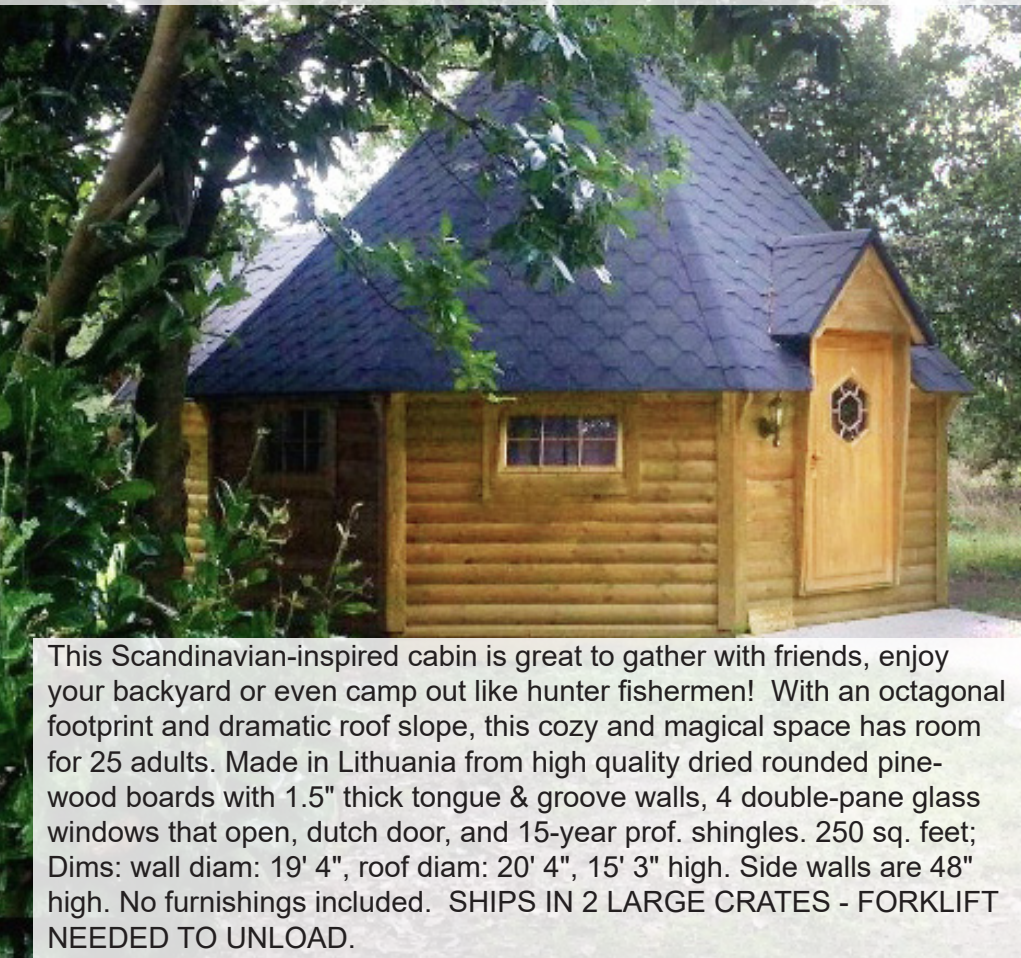
A beautiful round pavilion, the Rondo provides shelter and shade. Two semi-circles overlap and rotate 360° for a maximum opening of 180° in any direction. The Rondo also has a locking sliding door in the outer shell for access when structure is closed. The Rondo also works great as a hot-tub cover. 6'11" high side walls are 5mm tempered safety glass. The roof is 4 mm high impact resistant Plexiglass. Thermodynamic wind-driven fan. Shade curtain on inner half. Convex or concave roof available. Color choice: dark grey or dark green. Special Order item only - 3 month lead time. Made in Germany. RONDO Pavilion - 12'11" Dia x 10'5" high.



Watch it in action!



## The Scandinavian Cabin



This Scandinavian-inspired cabin is great to gather with friends, enjoy your backyard or even camp out like hunter fishermen! With an octagonal footprint and dramatic roof slope, this cozy and magical space has room for 25 adults. Made in Lithuania from high quality dried rounded pine-wood boards with 1.5" thick tongue & groove walls, 4 double-pane glass windows that open, dutch door, and 15-year prof. shingles. 250 sq. feet; Dims: wall diam: 19' 4", roof diam: 20' 4", 15' 3" high. Side walls are 48" high. No furnishings included. SHIPS IN 2 LARGE CRATES - FORKLIFT NEEDED TO UNLOAD.







## The Bali Gazebo

Entertain in a whole new way - or just lounge in private luxury. This exquisite gazebo is handcrafted in Bali of the highest quality Bangkirai wood. The elevated floor, mosquito netting and LED lighting create an intimate and comfortable setting for up to eight adults - or two people fully-reclined in utter bliss.

### Includes:

- (2) 8' long benches with cushions, pillows, bolsters, and coffee table
- Roof material, cushions, pillows, and bolsters are made from Sunbrella acrylic material with a 5-year warranty
- Roof construction has two layers for excellent ventilation while fully-functional mosquito netting attaches at the top peak for the best protection (gathers at the posts when it is not in use)
- LED lighting creates a warm ambience

### Specifications (#BG 10):

- 10' x 10' x 12'8" H, 100 sq ft footprint
- Roof is 15' x 15', 225 sq ft roofprint
- Benches are 8'3" L x 21.75" D x 20" H with 4" high cushion
- 10 total pillows (20" x 20")
- Coffee table is 57" L x 20" W x 22" H
- Made from sustainably harvested wood - FSC Certified
- May be placed on level ground - does not require concrete slab
- Can withstand wind loads of 80 mph



Larger 13' x 13', 169 sq ft footprint (#BG 13) available by special order







16001 Impact Way Pflugerville, TX 78660  
Office: (512)407-8500 | (877)760-8500  
Fax (512)407-8554  
customerservice@exaco.com  
www.exaco.com

