



2022  
Catalog

Fine Greenhouses, Composters, Garden Planters & More





## Greenhouses & Pavilions

|  |      |
|--|------|
| Why Exaco?.....                        | 3    |
| Royal Victorian Greenhouses.....       | 4-5  |
| Retro Victorian & Orangerie.....       | 6    |
| Eos Royal-T Orangerie & Cathedral..... | 7    |
| Junior Victorian & Custom Orders.....  | 8    |
| Greenhouse Accessories.....            | 9-10 |
| Why Riga?.....                         | 11   |
| Riga Greenhouses .....                 | 12   |
| Riga XL Greenhouses.....               | 13   |

## Cold Frames.....14

## Modular Raised Beds.....15

## Composters and Accessories...16-17

## Indoor and Outdoor Planters.....18-20

## Birdbaths and Fountains.....21

## Rotary & Folding Clotheslines.....22

## Bali Gazebo.....24



On May 2, 2021 Kim and Andrew Cook broke ground on Exaco's new 42,100 square foot office, show-room and distribution center. Our new home features a 5,000 square foot show-room allowing us to have our greenhouses and products on display to see and touch. Come visit us in summer 2022 at 16001 Impact Way in Pflugerville, TX!





## What makes Exaco different?

We offer top-quality greenhouses and products that our customers love. Skilled engineering and quality materials create superior products that will last for years to come. Beauty, strength, and functionality combine to provide a great growing environment or peaceful retreat.

Most of our products are manufactured in Europe and adhere to environmental and safety standards that exceed those of the USA. All products are BPA free and many of our plastic products are made from recycled material and are 100% recyclable.

Excellent Customer Service!!!

**Thicker Polycarbonate = Improved Insulation & Strength**

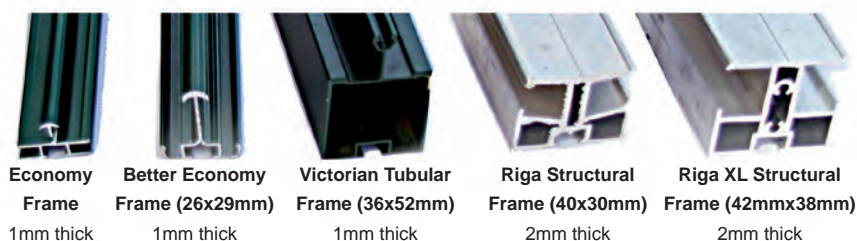
**4mm Twin-Wall R=1.43 (Basic entry level)**

**6mm Twin-Wall R=1.54 (Better Hobby level)**

**8mm Twin-Wall R= 1.61 (Riga curved panels)**

**10mm Twin-Wall (Riga gables & Janssens)**

**16mm Twin-Wall R=2.50 (Riga XL)**



*"Exaco not only has high quality products but they also have an excellent team behind the products to ensure every customer is happy with their purchase. Basically, when you work with Exaco you work with a dedicated team that makes your life a whole lot easier."*

*-Jesse, Online Retailer*



## Why Choose a Janssens Victorian Greenhouse?

- Classic English Victorian style with elegant full-length glazing panels
- High-quality 4mm thick tempered glass is tougher, stronger, and clearer
- 10 mm Twin-wall polycarbonate has a tough weather-resistant UV-coating and provides insulation and diffused light
- Thick rubber seals hold glazing securely and provide insulation
- Substantial aluminum profiles beat any competitors in this price range
- Royal Victorian doors can be placed on any side
- Optional accessories: shelving, hooks, misting system, seed trays, automatic window openers, shade cloth and more
- Customizable: Add doors/hinged doors/windows, place it on a stem wall, order a larger size or custom color and more
- Structural certifications and permit sets are available for most standard models



VI 36 Glass in Green



VI 36 Glass in Black on Stem Wall



VI 34 Poly in Black



VI 34 Glass in Black



VI 34 Black in Glass



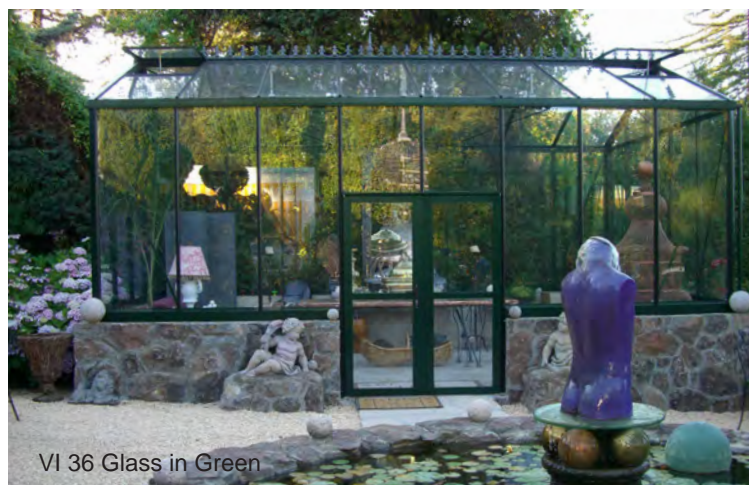
VI 23 Poly in Green



Royal Orangerie in Black



Royal Orangerie in Green on a Stem Wall



VI 36 Glass in Green

*"I've purchased two greenhouses in the past two years from Exaco, the VI-23 and the VI-36. They're both great. Exaco's service is outstanding, and the products are engineered to be built in just a few days. I've built two myself - alone! The video instructions make the construction easy and fast. My bonsai and orchids are happy in their new home."*  
 - Harris, greenhouse owner





## Royal Victorian Greenhouses

Featuring a rectangular floorplan, our Royal Victorian greenhouses are more customizable than ever! We now stock black or green finish with 4mm tempered glass or 10mm high-quality twin-wall polycarbonate for improved insulation and light diffusion. Standard features include sliding door(s) with customized placement, 6'7" sidewalls, a louvre window with auto opener and cold weather cover, roof windows with automatic or manual spindle opener(s), large bottom frame, gutters, downspouts, and a misting system. Available upgrades include double doors, hinged doors, door extensions to place structure on a knee wall to increase height, additional roof/louvered windows, shadecloth, shelves, seedtrays, or custom colors. Please see pricelist for details. Structural certification letters and drawings are now available.

**VI23 - 7'9" W x 10'2" L x 8'6" H, 79 sq. ft.** | Includes 2 roof windows (1 auto and 1 spindle opener) and 1 sliding door. Green w/Glass (#VI23 Green), Green w/Poly (#VI 23P), Black w/Glass (#VI23 Black) or Black w/Poly (#VI23 Poly Black) *Optional Accessories for VI 23:* 1 narrow top shelf (10' L x 4" W), 1 seed-tray shelf (10' L x 20" W x 4" D), full-length Shade Curtain (1 piece), available as a kit (#PP3L) or individual items.

**VI34 - 10'2" W x 15' L x 9' H, 150 sq. ft.** | Includes 3 roof windows (2 auto and 1 spindle openers) and 1 sliding door. Green w/ Glass (#VI 34), Green w/ poly (#VI 34 Poly), Black w/ Glass (#VI 34 Black), and Black w/ Poly (#VI 34 Poly Black). *Optional Accessories for VI 34:* 1 narrow top shelf (15' L x 4" W), 1 seed-tray shelf (15' L x 20" W x 4" D), Shade Curtains (3 pcs), available as a kit (#PP4L) or individual items.

**VI36 - 10'2" W x 19'11" L x 9' H, 200 sq. ft.** | Includes 4 roof windows (2 auto and 2 spindle openers) and 2 sliding doors to place separately or create double door opening. Green w/Glass (#VI 36), Green w/Poly (#VI 36 Poly), Black w/Glass (#VI 36 Black), Black w/Poly (#VI 36 Poly Black) *Optional Accessories for VI 36:* 1 narrow top shelf (19'7" L x 4" W), 1 seed-tray shelf (19'7" L x 20" W x 4" D), and Shade Curtains (2 pcs), available as a kit (#PP36L) or individual items.

**VI46 - 12'7" W x 19'11" L x 9'2" H, 250 sq. feet.** | Glass/Polycarbonate, Green/Black - Includes 6 roof windows (4 auto and 2 spindle openers) and 2 sliding doors to place separately or create double door opening. 12'7" W x 19'11" L x 9'2" H, 250 sq. feet. Green w/Glass (#VI 46), Green w/Poly (#VI 46 Poly), Black w/Glass (#VI 46 Black), Black w/ Poly (#VI46 Poly Black). *Optional Accessory Kit for VI 46:* 1 narrow top shelf (19'7" L x 4" W), 1 seed-tray shelf (19'7" L x 20" W x 4" D), and Shade Curtains (2 piece), available as a kit (#PP5L) or individual items.



# Specialty Victorian Greenhouses from Belgium



## The Retro Royal Victorian Greenhouse

Decorative panels and narrow glass (14" wide) adorn the elegant Windsor Estate-style greenhouse. Includes double hinged doors, 6'7" sidewalls, large bottom frame, gutters with downspouts and a misting system. We stock the black frame, but it is available in a variety of sizes and colors - allow 8 to 12 weeks for delivery; contact us for more details.

**Retro VI 34** - Includes 4 roof windows (2 automatic openers & 2 spindle) and 1 top-hang side window. 10'2" W x 15' L x 9' H, 150 sq. feet (#VI34 Retro)

**Retro VI 46** Includes 6 roof windows (4 auto openers & 2 spindle) and 2 top-hang side windows. 10'2" W x 19'11" L x 9' H, 250 sq. ft (#VI46 Retro)



## Royal Victorian Orangerie Greenhouses

The Orangerie T-shaped floorplan gives it a grand entrance point and more square footage to enjoy. Two designs to choose from, each with 6'7" sidewalls, 3 roof windows with auto openers, 2 louvre vents with auto openers and cold weather Lexan covers. 12'10" D x 15'6" L/W x 9' H, 185 sq ft (larger sizes can be ordered)

**Royal Victorian Orangerie** - Dark green or black are standard, but other colors and sizes may be ordered. Customize the size by adding sections to any wing of the greenhouse. Comes with double sliding doors. (#Royal Orangerie)

**Optional Accessory kit for Orangerie Greenhouses** includes 1 narrow top shelf (10' L x 4" W), 1 seed-tray shelf (10' L x 20" W x 4" D) in matching color, and a 5-piece shade curtain & misting system. (#R Orangerie Acc)



## White Royal Antique Orangerie Greenhouse

Similar to the Royal Victorian Orangerie, but with narrow glass panes and double turning doors for a 60" wide entrance. The Antique Orangerie is designed to sit on a 26" high stem provided by the customer. 12'10" D x 15'6" L/W x 9' H at peak with 6'7" side walls when placed on stem wall. Special order only, larger sizes are available. (#Antique Orangerie)





# EOS Royal T Antique Orangerie

The EOS Royal Antique Victorian greenhouse is a dramatic Orangerie with a steeper 38° roof slope. The unique T-shape floorplan with narrow 4mm tempered glass panes (14" wide) add to the antique appearance. Special design features a low threshold for easy entry! Includes 4 roof windows with automatic openers, 2 louvre vents & double hinged full-length glass doors. No shade cloth available.

**EOS T - Regular in White or Black** is 12'10" D x 13'2" L/W x 9'8" H at peak with 6' shoulders, 169 sq feet. It is designed to be built directly on the ground or concrete pad. **(#EOS T-Regular-W) or (#EOS T-Regular-B)**



**Royal EOS T - Wall Mount Option in White or Black** is specially designed to sit on a 15.75" H wall (customer builds their own wall). It has slightly shorter side-walls and the door drops below the frame to accommodate the wall. **(#EOS T-Wall-W) or (#EOS T-Wall-B)**



## Cathedral Victorian Greenhouse with Large Cupola

A stunning greenhouse or additional outdoor living space! The Cathedral includes 1 set of hinged double doors with closers, 1 single sliding door, 2 top-hang side windows, 1 louvre window, and 4 roof windows with spindle openers. It also features 2 heavy-duty aluminum reinforcements (front to back - 2.3" W x 5.2" D) for extra roof support and a pre-welded cupola frame (horizontal part). Comes with 4 mm tempered glass. Special order available in Fir Green, Black, Bronze, Anthracite or custom color. Dimensions: 300 sq.ft. - 15' W x 19'11" L x 12'2" H, 6'8" high at side walls; Cupola: 10'2" L x 5' 4"W. **(#Cathedral)**





# Janssens Junior Victorian Greenhouses

Junior Victorians have the same heavy-duty profiles as Royal Victorians but have shorter 5'2" sidewalls. The petite design makes a good fit for smaller urban yards. The single sliding door is located on a gable end. Includes 4mm tempered safety glass, gutters with downspouts, roof decoration, and large bottom frame.



J-VIC25

**Junior Victorian Greenhouse J-VIC 23** - Includes 1 roof window with automatic opener, 7'8" W x 10'2" L x 8'2" H, 79 sq. feet (#J-VIC 24).

**Junior Victorian Greenhouse J-VIC 24** - Includes 2 roof windows with automatic openers, 7'8" W x 12'6" L x 8'2" H, 96 sq. feet (#J-VIC 24).

**Junior Victorian Greenhouse J-VIC 25** - Includes 2 roof windows with automatic openers, 7'8" W x 15' L x 8'2" H, 116 sq. feet (#J-VIC 25).

**Optional accessories:** 7'6" long seedtray and shade cloth available. (#JP2)



**Junior Orangerie Greenhouse** - Unique T-shaped floorplan with 2 roof windows w/ auto openers and one sliding door. (#J-ORA) 10'3" D x 13' L x 8'2" H, 116 sq. feet

**Optional Junior Orangerie Accessory Kit** - 1 seed-tray shelf (along side wall) -7'6" L x 20" W x 4" D and 5-piece shade curtains



J-VIC25



Modern

## Custom Greenhouse Models

- **Model/Style** - We can order customized greenhouses!
- **Size** - Make it shorter, longer, narrower or wider!
- **Options:** - Doors, vents, glazing options, and more - let us know what you are looking for.
- **Colors** - Choose a color that fits your vision. RAL color system only.

Visit the configuration tool on the Janssens's website to create your custom design!  
<https://configurator.janssens-alusystems.be/janssens/en>

**Allow at least 12-14 week turnaround for all custom orders.**



# Greenhouse Accessories

**V= works in Janssens' Victorians; R= works in Riga models; U= Universal**

**Victorian bundled accessory kits (V)** are available, however all accessories may be purchased separately if desired.

**Shade Curtains (V)** for JVIC24, JORA, VI23, VI34, VI36, VI46, and Royal Orangeries (unavailable for EOS Royal-T).

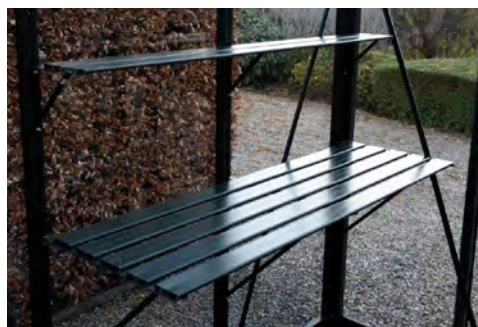


**Seed Tray Shelves (V)** are 20" W x 4"D, length is determined by the greenhouse. Adjustable height. Available for JVIC24, JORA, VI23-46, Royal Orangeries, and EOS Royal-T.

**Narrow Top Shelves (V)** 4" W, length is determined by the greenhouse. Adjustable height. Available for VI23, VI46, Royal Orangeries, and EOS Royal-T.

**Victorian Slat Shelving (U)** Flexible & cost-effective - fits a variety of greenhouses and/or positions. Designed to be able to run them end to end for longer stretches. 59" long.

- **Green 2-Slat - 9" W (#TAB2G)**
- **Black 2-Slat - 9" W (#TAB2B)**
- **Green 5-Slat - 21" W (#TAB5G)**
- **Black 5-Slat - 21" W (#TAB5B)**



**Victorian Windows:**

- **Additional Roof Vent (V)** Includes glass for underneath for Royal Victorians
- **Roof Vent Auto Opener (U)** with piston
- **Manual Spindle Opener (V)** high-quality threaded manual opener



- **Louvered Window (V)** Add to any sidewall for extra ventilation. Includes glass panel for underneath for Royal Victorians.
- **Louvered Window Auto Opener (V)** with piston

**Victorian Doors:**

- **Single Sliding Door (Royal VICs only)** - Add to any sidewall (except corners) for 27.5" W door opening.
- **Second Sliding Door (Royal VICs only)** - Add a second door to the first for a double opening of 56 7/8" W
- **Lowered Threshold for Sliding Door (V)** Soil profile must be cut for installation. Threshold will be 1 1/2" high.

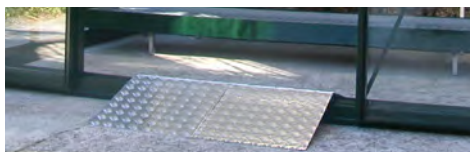


- **Hinged Double Door (Royal VICs only)** New low threshold - soil profile must be cut to install.
- **Door Extension Kit/ Door Drop Kit (V)** This kit is needed to bring the door to ground level when the greenhouse is placed on a stem/ knee wall. Additional glass for above the doors is not included and must be purchased locally.

**Deco Scroll Supports (V)**  
For additional structural support if standard factory kit is not considered enough. Usually installed in a set of three: one set at the ridge and one at each gutter. May interfere with shade cloth.



**Misting System (U)** 14' long for a 20' greenhouse - cut shorter for smaller houses. Has 5 misters. If shipped UPS/ Fed Ex, it comes in 2 pieces w/ connector. **(#VI BER)**



**Wheelbarrow Access Plate (U)** Heavy duty aluminum - 19.5" W x 21" L (each side) x 1.75" H in the middle **(#VI RIJ)**

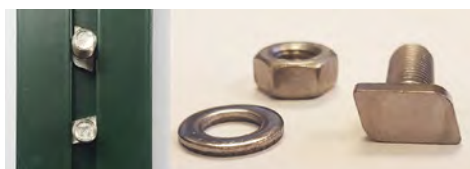
**Illumitex Eclipse GEN2 N Bar LED Grow Light with F3 Spectrum (U)**

- This slim 4' waterproof design is damp-rated and dust-resistant.
  - Can be daisy-chained together in runs of up to 15 fixtures.
  - 12 LEDs in F3 Spectrum produce up to 104 PPF for the fastest germination & flowering. Ideal for vertical farming, cannabis and hobby growing
  - Install 12"-36" above the plant canopy
  - 5 year warranty
- Available with a 9' power cord **(#GEN2N-PC)** or a cord to daisy chain **(#GEN2N)**.



**Light My Shed 4\* (U):** Solar powered LED light: 3 watts/ 250 Lumens (up to 4 hrs on a sunny day). Uses a Ni-MH Battery - 4.8 V - 2000 mA. Light dome is 6"D x 7"H, 9' wire between panel and bulb. Limited 2-year warranty. **(#GS-16B)**

**T-Bolts\* (U):** 20 Stainless Steel hammerhead bolts/nuts. Unique head can be inserted into profile channels, then turned 90° to attach accessories once the greenhouse is assembled. **(#Riga T-Bolts)**





# Greenhouse Accessories (Cont'd)

V= works in Janssens' Victorians; R= works in Riga models; U= Universal

**Additional Roof Window for RIGA 2s/3s/3/4s/4/5 (R)**- to be added as greenhouse is assembled - polycarbonate sidewall must be trimmed to obtain poly window piece. Includes opener. (**#RIGA-RoofWindow**)

**RIGA Automatic Window Opener (R)** with quick release "arm" - allows opener to be disconnected in adverse weather conditions. Paraffin oil in piston expands starting around 72°F. (**#RIGAAutoOpener**)

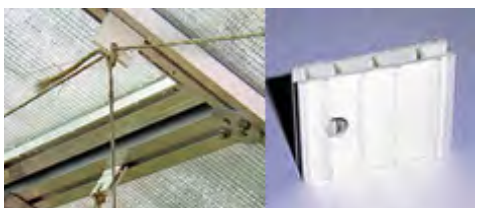
**Replacement Piston for Automatic Window Opener (U) (#Piston)**

**Roof Window Wind Restraint System (U)** - Two 15" stainless steel cables with nuts & bolts - for 1 roof window. (**#RIGA Wind 1**)



**Sash-Lock with screws (U)** - recommended to shut roof windows and top half door (**#Sash-Lock**)

**Adjustable Stainless Steel Hooks (set of 5) (U)** - T-bolt head easily installs into channels to allow for hanging plants, lights etc. (**#RIGA Metal Hooks**)



**Plastic Hooks (set of 10) (U)** - Easily installs in channels to hang growing wire or rope. (**#RIGA Plastic Hooks**)

**Heavy Duty Seed Trays (U)** - 24" x 16" x 3.5" D (**#RIGA Shelf Planter Boxes**)



**Riga Shelves (R)** - Aluminum framing with polycarbonate horizontal surface. Supported with angle struts from underneath. Shelf length to fit all Riga, Riga S and Riga XL. May be trimmed if full length is not desired. Adjustable Height. **Narrow Top Shelf - 10" W**  
**Bottom Table Shelf - 25" W**



**Riga Foundation Frame (R)** - To avoid concrete work to anchor. Attached to soil profile and buried in a trench to anchor your Riga greenhouse. Riga and Riga S is C- shaped extrusion Riga XL series is an I-Beam shape

**Door Extension kit for RIGAs (R)** to raise greenhouse 20" on stem wall:

- **RIGA Door Ext S-** Riga 2s/3s/4s
- **RIGA Door Ext** - Riga 3/4/5
- **RIGA XL Door Ext** has parts for 2 doors



**RIGA XL Pro Kit (R)**- Add for a "complete" starter kit: 1) Top & Table Shelf; 2) 3 sets of professional LED grow lights (46" L); 3) 1 24" intake shutter vent; 4) 1 20" exhaust fan; 5) thermostat for vent & fan; 6) 17,500 BTU 220 V heater; 7) 5 heavy duty seed trays; 8) 10 stainless steel hooks & 10 heavy duty plastic "hooks". Also includes: Facilitation Kit

**RIGA XL Assembly Facilitation Kit (R):** 25' metric tape measure, 10mm socket wrench, 10 mm open wrench, 2 20' J-hook ratchet straps, window restraint cables, 2 tubes Boss 399 silicone caulk, permanent marker

**Boss Clear Neutral Cure Silicone Caulk (Colors 400-157)\*:** to seal between polycarbonate and frame. Made in USA. (**#Boss**)

## Ventilation/Heating

**Exhaust Fan(U)** - use with VC115-C thermostat. Mount at high location in the back wall. Has 9' plug-in power cord.

- **12" Exhaust Fan** for RIGA 2, 3, 4, J-Vics, and VI 23; Requires 12.25" x 12.25" opening. (**#VES12C**)
- **16" Exhaust Fan** for RIGA 5, VI 34-46; Requires 16.25" x 16.25" opening. (**#VES16C**)



- **20" Exhaust Fan** for RIGA XL series. Requires 20.25" x 20.25" opening. (**#VES20C**)

**Intake Shutter Vent (U)** use with VC115-C thermostat. Mount in upper corner of lowest front panel. Has 9' plug-in cord.

- **16" Intake Shutter** for RIGA 2, 3, 4; Requires a 16.25" x 16.25" opening.
- **20" Intake Shutter** for RIGA 5, VI 34-46. Requires a 20.25" x 20.25" opening.
- **24" Intake Shutter** for RIGA XL series. Requires a 24.25" x 24.25" opening.

**Thermostat Control (U)** Has 9' "piggyback" plug-in cord. Use an outlet splitter(not included) to control fan and intake in tandem. Pre-wired for cooling. (**#VC115-C**)

**Lexan Panel (V)** replaces a glass pane to install fan or vent in Victorian greenhouse. High-quality UV-protected - can be cut with a jigsaw. (**#Lexan**)

**Milkhouse Heater (U)** Portable electric 110-120V heater with 3 settings: Fan/1300W/1500W. For RIGA 2-5, J-Vic and VI 23-36 units. 6' cord with 3-prong plug. 10" x 9" x 16" H. (**#H-2308**)

**Infrared Industrial Heater (U)** Portable electric 208-240V (4200-5600 watts) heater. Full power produces ~18,500 BTU. 6' heavy-duty cord with NEMA #6-30P plug. Requires 30 AMP breaker. 12" x 12" x 16" h. Perfect for the RIGA XL and VI 46 units. (>200 sq.ft.) (**#DR988**)



# Hoklartherm Riga & Riga XL Greenhouses

- German engineering combines with superior materials to produce a commercial quality greenhouse for year-round growing
- Extra-wide 8-10mm twin wall (Riga) and 16mm triple wall (XL) polycarbonate glazing for advanced insulation & strength
- Exceptional wind & snow resistance due to the unique shape
- Do-It-Yourself assembly with US-based customer support 7 days/week plus animated assembly video
- Oversized roof windows with automatic openers and a large Dutch-style door(s) with keyed lock
- Flexible installation and anchoring options allow customization
- Structural certifications and drawings are available for permits for most models.
- Optional accessories: shelves, hooks, foundation, misting system, heater, exhaust fan/intake vent, drop door kit for stem wall installation, pro LED grow lights and more. See accessory page for details.

Riga XL 6 in Canada



Cool weather greens growing happily inside a snow-covered Riga XL



Riga XL 8



Riga XL 9 with drop door kit on a stem wall



**Q: How do the automatic window openers work?**

**A:** The automatic opener is powered by a piston filled with paraffin oil. As temperature creeps above 72 degrees, the paraffin begins to expand and pushes out the piston rod - causing the window to open. No electricity needed!

*"Winters in Maine are long and cold. Some lucky people get to be snowbirds and fly south to find warmth and lush green plants. But for the rest of us... it can be rough. My RigaXL has been my salvation. It is my sanctuary from the Wintertime Blues as well as the source of superb salads, tomatoes, peppers and herbs right up until it's time to get seedlings started in Spring. A series of severe storms that crushed neighbors' greenhouses over the past several years did not affect it at all. I am 110% satisfied with it - the only problem is that now I want another one!!"*  
- Miriam, Riga XL 6 owner

For more information and images, please visit [www.exaco.com](http://www.exaco.com)



# Riga Greenhouses

Available in two widths, Riga greenhouses have superior support and thick twin-wall polycarbonate glazing (8mm poly side walls/10mm poly gable ends) for better insulation. The large roof vents, big rear window, and split barn-style door (30" wide x 79" high) with lock provide plenty of ventilation. The unique shape allows snow to slide off and wind to blow over, making it suitable for a wide variety of climates and weather. Each subsequent model number represents an additional section of polycarbonate panels.

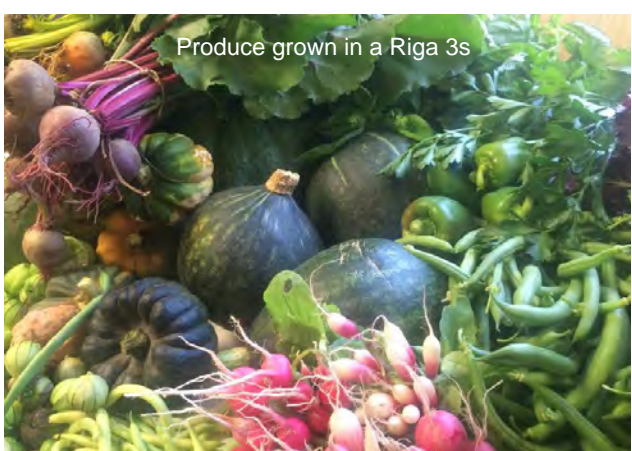


## Riga S Series (7'8" width)

**Riga 2s** - 1 roof window with auto opener  
7'8" W x 7' L x 7'1" H, 54 sq ft (#RIGA II)s

**Riga 3s** - 1 roof window with auto opener  
7'8" W x 10'6" L x 7'1" H, 81 sq ft (#RIGA III)s

**Riga 4s** - 2 roof windows with auto openers  
7'8" W x 14' L x 7'1" H, 108 sq ft (#RIGA IV)s



## Riga Series (9'8" width)

**Riga 3** - 1 roof window with automatic opener  
9'8" W x 10'6" L x 7'7" H, 102 sq ft (#RIGA III)

**Riga 4** - 2 roof windows with automatic openers  
9'8" W x 14' L x 7'7" H, 135 sq ft (#RIGA IV)

**Riga 5** - 4 roof windows with automatic openers  
9'8" W x 17'6" L x 7'7" H, 165 sq ft (#RIGA V)







Growing big in a Riga XL

## Riga XL Professional Series

German engineering has created an amazingly rugged, heavy-duty grower's greenhouse. The Riga XL's unique shape stands up to extreme wind and snow loads, while the 16mm triple wall polycarbonate offers superior insulation for year round growing. Large roof window vents (37.5" W x 39.5" H) provide good ventilation. Two locking split barn-style doors (37.5" W x 74" H) provide access as well as ventilation at the front and rear of the greenhouse. The Riga XL may be anchored to a concrete perimeter wall or slab, raised on a stem wall with a drop door kit, or may also be anchored directly in the ground with a foundation frame (no concrete needed!). Additional accessories are available including shelves, benches, hooks, fans, vents, heaters, grow lights and more - see our pricelist for details.

Please contact us if you are in an area requiring a permit for building. We have structural certifications and permit sets available. We also have a extreme high load kit available for the Riga XL if needed. See accessory page for more details.



Riga XL 6 in heavy snow



Riga XL 8



Riga XL 6  
mounted to wooden deck

The Riga XL is available in a variety of sizes - each model number adds an additional section of polycarbonate in length.

**Riga XL 5** - 4 roof windows with automatic openers  
14' W x 16'5" L x 9'10" H, 231 sq.ft. (#Riga XL5)  
Optional Foundation Frame (#RIGA XL 5 Base)

**Riga XL 6** - 4 roof windows with automatic openers  
14' W x 19'10" L x 9'10" H, 280 sq.ft. (#Riga XL6)  
Optional Foundation Frame (#RIGA XL 6 Base)

**Riga XL 7** - 6 roof windows with automatic openers  
14' W x 23' L x 9'10" H, 322 sq.ft. (#Riga XL7)  
Optional Foundation Frame (#RIGA XL 7 Base)

**Riga XL 8** - 8 roof windows with automatic openers  
14' W x 26'3" L x 9'10" H, 368 sq.ft. (#Riga XL8)  
Optional Foundation Frame (#RIGA XL 8 Base)

**Riga XL 9** - 8 roof windows with automatic openers  
14' W x 29'6" L x 9'10" H, 413 sq.ft. (#Riga XL9)  
Optional Foundation Frame (#RIGA XL 9 Base)



## Cold Frames and Raised Beds

### BioStar 1500 Premium Cold-Frame (#Biostar 1500)

8mm twin-wall polycarbonate for strength and better insulation. Includes 1 paraffin automatic opener. 5-year warranty. 59"L x 32"D x 16"/20" H

### BioStar 1000 Premium Cold-Frame (#Biostar 1000)

8 mm twin-wall polycarbonate for strength and better insulation. Screen protects against bugs, flies or heavy rain during summer. 5-year warranty. 40" L x 30" D x 17.5"/20.5" H

**Year-Round Cold-Frame (#Year-Round)** - For cold or warm weather. In summer, the 4mm twin-wall polycarbonate cover slides out to reveal a screen to protect from bugs, wind, and hail (screen comes assembled). 2-year warranty. 50" L x 23" D x 12" & 16" H

**Easy-Fix Double Cold-Frame (#CF120/100)** - 4 mm twin-wall polycarbonate to start your garden early. Lid on each side. Easy to assemble. 2-year warranty. Size: 48" L x 40" D x 12"/16" H.



**BioStar 1500**



**Year-Round**

## Kombi Raised Beds - Customize to Your Needs!

The Juwel "Timber" Raised Bed Coldframe combination is a perfect solution for tending a small garden while maintaining a raised position.

Enjoy an extended growing season by being able to begin growing in late winter and harvest in late fall. The cold frame and the base both have thermal properties that help capture the maximum amount of warmth to start and sustain growth longer than normal. Includes two ventilator latches to open the cold frame lid in four different positions.

Easy-to-assemble injection molded block wall structure is BPA-free high-grade polyethylene in a UV-protected Nordic weathered grey color. Raised bed is 51" x 24" x 24" H, cold frame is 50" x 12" x 15.75" H. Panels are 4mm twin wall polycarbonate. Made in Austria. Product is Patented. (5-year warranty) (#Combi RB+CF 20828)



**Kombi Raised Bed /Cold Frame**



**BioStar 1000**



**Easy-Fix Double**





# Modern Raised Beds

## Ergo Quadro Modular Raised Beds

### Create a Customized Garden Arrangement!

Ergo Quadro Raised Beds come in a variety of shapes and sizes to be combined and stacked to fit your vision and height needs. The attractive wood textured pieces are made from BPA-free polypropylene. Ergonomically designed for gardening at a comfortable height, the Ergo Quadro allows you to make a beautiful and customized focal point. From Graf in Germany, 5-year warranty.

**Small (square)** 24" x 24" x 10" H (#645115)

**Medium (rectangle)** 24" x 31.5" x 10" H (#645116)

**Large (square)** 31.5" x 31.5" x 10" H (#645117)

**\*\*Click multiple sets together for additional height!\*\***



## Balcony Raised Bed Planter

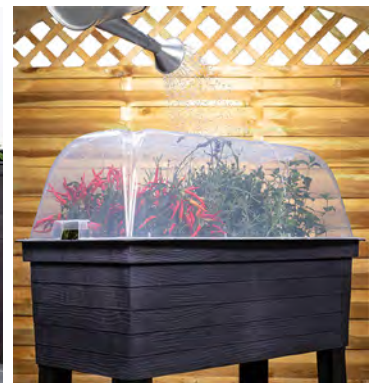
### Create a Customized Garden Arrangement!

This textured wood-look planter works well for a variety of settings. Optional protective cover available to protect young plants from cold or heavy watering (water drips though top channels slowly to the plants.). Drainhole at bottom allows hose attachment to direct water (not included, holes must be drilled out). Planter interior is 27" L x 12" W x 10" D.

**Balcony Raised Bed Planter** 12.8 gal capacity, Assembled planter is 29.5" W x 14.5" D x 26" H. (#645140)

**Protective Cover** - 29.5"L x 14.5" W x 8.5"H (#645141)

**SET: Balcony Raised Bed Planter w/Cover** (#645140/1)



## Hexagonal Modular Raised Beds

### Extend the Height or Length!

Combine sets to make it your own! Basic set (#645100) consists of six 21.5" L x 10" H panels. The extension set (#645101) lengthens the basic set by 21.5". Beautiful and sturdy wood-texture components are UV and moisture-resistant- no sealing or painting needed! Made of recycled BPA-free plastic in Germany. 5-year warranty.



For more information and images, please visit [www.exaco.com](http://www.exaco.com)





## BPA-Free Compost Bins

**Aerobin Insulated Composters** - The very best consumer composter on the market today! Patented aeration lung system makes it quick and easy - no turning required! Just drop kitchen and yard waste at the top and later remove through the bottom access doors. Insulated walls and lid To support year-round aerobic composting. Collect leachate at the bottom to dilute for compost tea. Now in two sizes!

### Aerobin 200 (Grey)

20" W x 20" D x 46" H (#Aerobin 200)

### Aerobin 400 (Green)

29" W x 29" D x 47" H. (#Aerobin 400)



- 1) **Mr.Spin® Compost Tumbler:** 160 liters/43 gal. Two compartments keep fresh organic waste from older matter - separation makes better compost. This popular tumbler is easy to use and well-suited for small yards. Simply turn and waste is mixed easily. Includes a thermometer. Black access doors and metal stand. 22.8" L x 22.4" W x 37" H. From China. (#Mr. Spin)

- 2) **Aeroplus 6000 3-stage composter.** A heavy-duty, easy-to-operate three stage composter. Simply turn the crank handle and the waste drops from the 2nd to the 3rd chambers, in the process both chambers get mixed. The top chamber is relatively airtight designed to keep flies out. From Juwel in Austria. Capacity: 140 gals. Size: 31" x 31" x 43" H. (#Aeroplus 6000)

- 3) **AeroQuick Composter** - Made from 5mm thick heavy-duty BPA-free plastic to last 10 to 15 years. They are 50-100% thicker than similar composters - strong enough to stand on! Comes with locking lid and two bottom access doors to remove compost. Open bottom. Available in 2 sizes. From Juwel of Austria.

**AeroQuick 187 gal.** (#AQ 187) - 37" x 37" x 43" H

**\*Includes soil grid\***

**AeroQuick 77 gal.** - (#AQ 77) - 28.4" x 28.4" x 31.5" H

- 4) **ECO-Master Composter** - Basic composter in black, side walls snap together, large top lid, 2 doors at the bottom. Open bottom. Made from 100% recycled PP, 2.1 mm thick walls. From Graf in Germany. Available in two sizes.

**Eco-Master 300 (#628000)** - 80 gal. black, 24" x 24" x 35.5" H.

**Eco-Master 450 (#628001)** - 120 gal. black: 27" x 27" x 40" H.

- 5) **ECO-King Composter** - Basic composter in green, a step up from the Eco Master, side walls snap together, large double lid, two latching access doors at the bottom. Open bottom. Made from 100% recycled PP, 2.3 mm thick walls. Size: 28" x 28" x 33" H. From Graf in Germany.

**ECO-King 400 (#627003)** - liters/110 gal. green, 28" x 28" x 33" H:

**ECO-King 600 (#627001)** - liters/160 gal. green, 31.5" x 31.5" x 37.5" H



### Q: Why do many of your composters have an open bottom?

A: Microorganisms help digest your compost and make it richer. An open bottom allows the compost to have contact with the ground so these beneficial microorganisms can assist you in composting. A soil fence accessory is available to prevent tunneling rodents from reaching your compost.



## BPA-Free Compost Bins



**Thermo Wood Composter** - The latest high-end compost bin from Graf, it looks like real wood grain. The Thermo Wood has a very large top opening covered with two hinged lids and features two bottom access doors on opposite sides. The side walls have hidden air holes for better ventilation and compost production.

The 4.2mm thick PP plastic (mostly recycled) features Thermelon (air pockets for better insulation).

This open-bottom composter also includes a Soil Grid to prevent tunneling rodents.

Size: 31.5" x 31.5" x 39.5" H - 40 lbs. (#626051)



**Thermo King 900** - 240 gal. giant composter. Made with Thermelon with air pockets for better insulation and 4.2 mm thick PP plastic (mostly recycled material). The Thermo King is stronger and more durable than standard composters. Side walls hook together. Very large top loading doors and two large bottom access doors for easy compost removal. Size: 40" x 40" x 40" - 240 gal. From Graf in Germany. (#ThermoKing 900)



**Thermo Star 1000** - 267 gal. Jumbo Composter. Made with Thermelon with air pockets for better insulation and 4.5 mm thick PP plastic (mostly recycled material). This is a step above the Thermo King - the six side walls are held together by thick rods. Has top-loading doors and two bottom wall sections that can be opened for easy compost removal. Size: 50" x 50" x 41" H - 267 gal. From Graf in Germany. (#Thermo Star 1000)



**2-N-1 Kitchen Compost Bucket** - Perfect size to sit on the kitchen counter. Lift-off lid comes with clear rubber gasket to limit odors. Use handle on inner plastic bucket to carry scraps to your composter. Available in 5 colors: White (#CPBW01), Oatmeal (#CPBS01), Soft Green (#CPBG01), Matte Silver (#CPBS04) or Stainless Steel (#CPBS03) Size: 10" W x 7.5" D x 10" H, 1 gallon capacity.

**ECO 2000 Kitchen Compost Pail** - Our #1 item! Hinged lid with replaceable carbon filter. Place on counter or hang with 2 screws/hooks (not incl.) inside a cabinet. Made in Canada. 2.4 gal., 8.5" x 9" x 11"H. (#ECO2000)

**ECO 2500 Replacement Filters for ECO 2000** - Replace carbon filters every three months. Pack of 3 filters. (#ECO 2500)

**Compostable BioBags** - Use to collect kitchen scraps, then drop in an outdoor compost bin.





***Due to high shipping container costs, we are not stocking Graf rain barrels for 2022. We continue to be the US Graf distributor and hope to be able to offer them again next year!***

### **What makes GRAF rain barrels better?**

- ▶ Water quality - closed top and multi-layer construction protects your rainwater from sunlight so there is no water degradation/algae growth.
- ▶ UV stable, they are made from the highest grade of BPA-free plastic.
- ▶ All tanks include a spigot at a perfect height for a watering can.
- ▶ Included Universal Downspout Connection Kit (rectangular) makes installation easy.
- ▶ Weather resistant and winter proof - leave tap open in freezing weather.
- ▶ Closed system to keep out mosquitoes.
- ▶ Made in Germany and come with a manufacturer's warranty.



### **Calypso Trellis Planter from Germany**

Calypso Planter with Trellis - This unique planter has a built-in 2.5 gallon water reservoir with double bottom for self-watering. The water level indicator lets you know when to water! Includes 4 wheels, 2 lock to keep the planter in place. Trellis provides privacy and growing support. May be used outdoors or indoors (does not leak). Assembled size: 31"W x 13.5" D x 53" H. Made in Germany. Available in Green (#1.416Green), White (#1.416) or Anthracite Grey (#1.420Grey).





# Lightweight Fiber Clay Planters

## Q: What is Fiber Clay?

A: Fiber Clay is made from 70% finely pulverized clay/earth, 25% recycled polyester resin, and 5% non-toxic organic binders. Fiber clay is injection molded to create attractive and detailed pieces that are durable and lightweight. These planters make it easy to move plants indoors during freezing temperatures if desired. Fiber Clay is safe outdoors to 0° F.



**Speckled White Medium Large Round Planter** - Larger size works for a wide variety of plants. Includes rubber push-out plug in bottom of the bowl so planter can be used either indoors or outdoors. Made from FiberClay. Size: 13" tall / 17" dia., 10 gallons **(#FM-WP17)**



**Woven Medium Square Planter (set of 2)** - Washed sandstone with rubbed tint to accent woven detailing. Includes rubber push-out plug in planter to allow indoor or outdoor use. Made from FiberClay. Size: 11.5" x 11.5" x 9.5" h. 3.5 gallon capacity. **(#FM-SBWP)**



**Sandstone Ringed Medium Planters (set of 2)** - Neutral washed sandstone color to coordinate well. Includes rubber push-out plug in bottom of the bowl so planter can be used either indoors or outdoors. Made of Fiber Clay. 13.5" dia. / 11.5" tall, 4.5 gallon capacity. **(#FM-RRP)**



**Speckled Gray 3-Piece Planter Set**  
Lightweight and easy to move as needed. Includes rubber push-out plug in planter for indoor or outdoor use. Made from FiberClay. **(#FM-Pot3G)**

Set includes 3 sizes:

- 8.5" dia x 7" h; 1.25 gallons
- 11.5" dia x 8.75" h 2.5 gallons
- 14.25" dia x 11.5" h 5.5 gallons



For more information and images, please visit [www.exaco.com](http://www.exaco.com)



## Fiber Clay Planters and Urns

Lightweight, attractive, and very durable. Made from 70% clay, 25% recycled polyester resin and 5% non-toxic binders. Can withstand temperatures down to 0° F.

**Speckled Gray Hanging Planter** Round hanging planter includes rubber push-out plug for indoor or outdoor use. 13.5" dia x 6.75" h, 3 gal. capacity. 1 Three ropes - each 16". (#FM-HBG13)

**High Gloss Marbled Planters** Deep gem-like colors make these marbled planters a handsome addition to any home or outdoor area. Rubber push-out makes them ideal for indoors or out. 11" dia. x 13" h, 4 gallon capacity. Available in green, red, or blue.



**Modena Urns** - Comes in 2-pieces which screw firmly together. Size: 16" D x 18" H

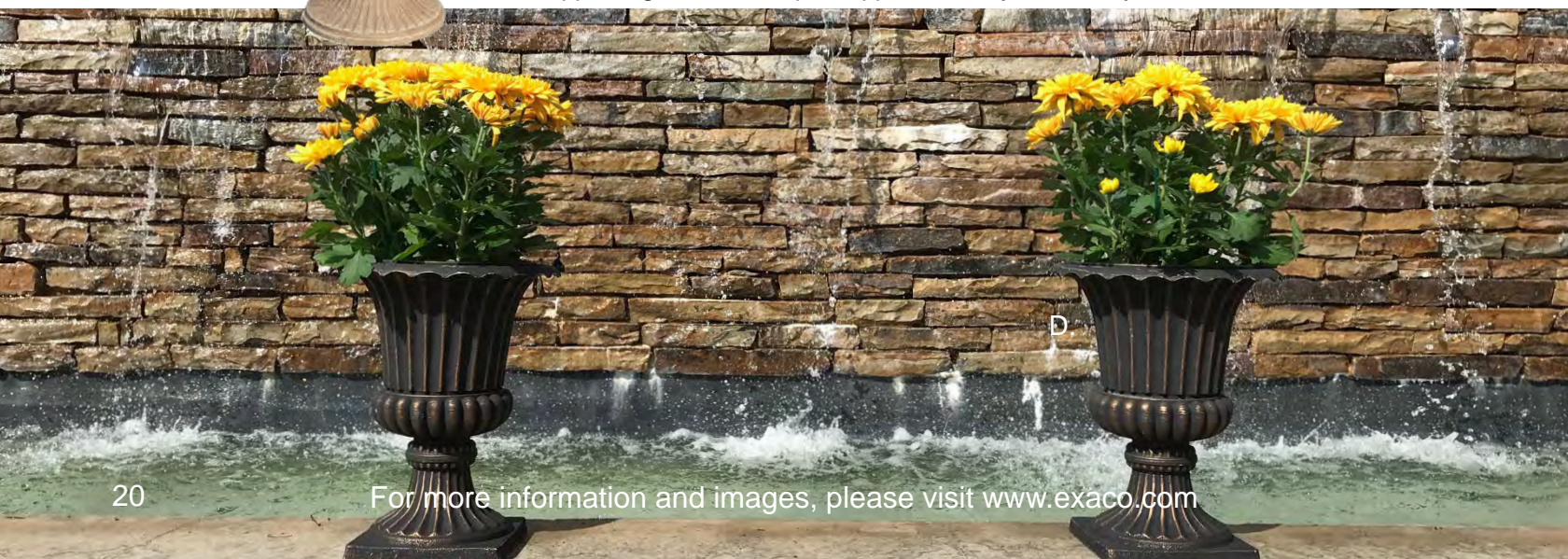
**A. Modena Urn Washed Finish in Dark Gray/Black** - Attractive detailing and a nice washed finish make an elegant statement. (#FM-012)

**B. Modena Urn Washed Finish in Sandstone** - Relief detailing on planter and base is accented by the washed finish. (#FM-0071)

**Imperial Urns** - Small lightweight urns make it easy to move plants to safety during winter freezes. 4-pieces push securely together. Size: 11.5" D x 14" H; 1 gallon capacity; Inside: 7" dia x 7.5" deep. Includes rubber push-out plug in bottom of planter for optional drainage.

**C. Imperial Urn in Washed Finish in Gray** - Small urn planter. Attractive and lightweight (#FM-013)

**D. Imperial Urn- set of 2 -Antique Copper** - Small urn with an appealing rubbed antique copper finish. (#FM-UrnC)





# Fiber Clay Birdbaths

Lightweight, attractive, and very durable. Made from 70% clay, 25% recycled polyester resin and 5% non-toxic binders. Can withstand temperatures down to 0° F.

**Marbled Florentine/Scroll Birdbaths** Elegant high-gloss basin and decorative pedestal provide a beautiful accent to any garden. Three pieces push together. Size: 20" D x 20" H, Basin is 2 5/8" deep.

**A. Florentine Marbled Birdbath in Ivory/Black - (#FM-0203B)**

**B. Florentine Marbled Birdbath Green (#FM-0203G)**

**C. Scroll Vine Marbled Birdbath Red - Decorative scroll trim on basin and pedestal. (#FM-0082)**



**Textured Birdbaths** feature taller pedestal and glossy basin. Size: 18" D x 23.5" H. Basin is 2 3/4" deep.

**D. Two-Shade Blue Birdbath (#FM-2475B)**

**E. Two-Shade Green Birdbath (#FM-2470G)**

**F. Blue Gray Birdbath (#FM-0447)**

## Victorian Dusty Rose Birdbath

Elegant matte porcelain-look basin with decorative relief scroll detailing on rim. Pedestal also features decorative fleur de lis pattern. Size: 20" D x 20" H, Basin is 2 5/8" deep.



## Bird Bath with Solar-powered Fountain Pump

Create a haven for your feathered friends with this bird bath with solar powered fountain. Looks like concrete, yet the lightweight fiberclay makes it easy to handle and move around as needed. Basin is 2 5/8" deep (1.25 gallons) perfect for a variety of birds. Easy to assemble - three pieces screw together. Center section can be filled with sand for added stability in high wind areas. Frost resistant. 18" diameter, 24" high.

A. Aged Cement with square base

B. Aqua Blue with round base



## Tiered Fountain in Pastel Green

Includes 12 Volt submersible pump with 12' electric cord (for 110 volt grounded outlet). Four pieces screw together during assembly. The pedestal is hollow and can be filled with sand to increase stability in heavy wind areas. Base is 11" dia. Large basin is 25" high x 22" dia. x 4" deep (2 gal. capacity). Top basin is 32" high x 9" dia. Overall height is 36" tall. (#FM-300)



For more information and images, please visit [www.exaco.com](http://www.exaco.com)





## Clothes Dryers from Juwel of Austria

Juwel, winner of multiple Red Dot Design Awards, presents innovative and easy-to-use clotheslines for indoor and outdoor use. Juwel makes it simple to dry delicates, comforters, and other laundry naturally. Anodized aluminum makes the dryers easily-portable, but also very strong, durable and corrosion-resistant. The compact form and versatility make them ideal for small spaces and urban living.

### Evolution 600 Lift Rotary Clothes Dryer

Our highest quality clothes dryer with adjustable height! 167 feet of line hold up to 3-4 washing machine loads. The clothesline opens and folds up with easy one-hand lever assisted by a gas powered pump. The cover even retracts automatically during opening to keep lines clean between uses. The height adjusts to 6 different levels between 5'3" and 5'11". Comes with ground socket for simple installation. 5-year warranty (excludes cover) (#Evolution 600)



### Novaplush 500 Rotary Clothesline

High-quality clothesline with 140 feet of line to hold up to 2-3 laundry loads. The Novaplush opens and folds up easily with a one-hand lever. The cover retracts automatically during opening to keep lines clean between uses. Comes with ground socket for simple installation and 5 year warranty (excludes cover). Open: 76" x 76" x 80" H. (#Novaplush Easy 500)

Novaplush or Evolution 600 Replacement Cover - Easy to Install! (#NovaPlus Cover)



### Universal Ground Socket

Holds most umbrellas and/or rotary clotheslines, volleyball nets, etc. Great for beach umbrellas. Adjustable rings allow for perfect diameter fit. Comes with aluminum "handle" to drill socket in to the ground. Ends up perfectly flush with the ground. Lawn mower safe. Fits: 5 different tubes 1.25" - 2.2" diameter. (#30026)

### Twist Free-Standing Dryer

Folds double to carry outside while loaded and collapses completely (3" wide x 2" deep) to hang on included wall bracket. 45' of line. The Twist may also be used over a tub against the wall. Made from anodized aluminum and polyamide plastic parts; strong but very lightweight. (#Twist)







## The Bali Gazebo

Entertain in a whole new way - or just lounge in private luxury. This exquisite gazebo is handcrafted in Bali of the highest quality Bangkirai wood. The elevated floor, mosquito netting and LED lighting create an intimate and comfortable setting for up to eight adults - or two people fully-reclined in utter bliss.

### Includes:

- (2) 8' long benches with cushions, pillows, bolsters, and coffee table
- Roof material, cushions, pillows, and bolsters are made from Sunbrella acrylic material with a 5-year warranty
- Roof construction has two layers for excellent ventilation while fully-functional mosquito netting attaches at the top peak for the best protection (gathers at the posts when it is not in use)
- LED lighting creates a warm ambience

### Specifications (#BG 10):

- 10' x 10' x 12'8" H, 100 sq ft footprint
- Roof is 15' x 15', 225 sq ft roofprint
- Benches are 8'3" L x 21.75" D x 20" H with 4" high cushion
- 10 total pillows (20" x 20")
- Coffee table is 57" L x 20" W x 22" H
- Made from sustainably harvested wood - FSC Certified
- May be placed on level ground - does not require concrete slab
- Can withstand wind loads of 80 mph



Larger 13' x 13', 169 sq ft footprint (#BG 13) available by special order







16001 Impact Way Pflugerville, TX 78660

Office: (512)407-8500 | (877)760-8500

Fax (512)407-8554

customerservice@exaco.com

www.exaco.com